



压片机专辑

Professional Tablet Press Machine Catalog



上海天凡药机制造厂
Shanghai Tianfan Pharmaceutical Machinery Factory
上海泰博雷特机械有限公司
Shanghai Tablet Press Mechanical Components Co., Ltd.



扫码 (请用手机扫描)

地址: 上海市松江区大港工业园区朱家浜路168号
电话: 021-57698023 57698183 57595015
传真: 021-57698600

内贸部:
销售及售后服务专线: 销售电话: 400-8805118
+86-15313926079 QQ: 2850665072
+86-18017027116 QQ: 2850665070
+86-18017027110 QQ: 2850665077
+86-18017027108 QQ: 2850665075
+86-18017027107 QQ: 2850665076 QQ: 2850665074
E-mail: stf@stcstp.com

外贸部:
销售及售后服务专线:
+86-018017027102 QQ: 2850665075
技术服务: 021-57698185-22
投诉电话: +86-15916326079 +86-18017027115
+86-18016381560 QQ: 2850665073

公司网址: www.tablet-press.net m.tablet-press.net www.tp-tabletpress.com





我们不是简单的接受订单，而是提供固体制剂整体解决方案，帮助客户做出正确的选择。通过由经验丰富的客户服务团队进行详细的订单前分析来预测和避免客户问题；严格的生产过程控制和完整的检验报告，确保每一个模具都经得起考验。

We are not simply accepting orders, but providing overall solutions for solid preparations to help customers make the right choices. Predicting and avoiding customer problems through detailed pre-order analysis by experienced customer service team; strict production process control and complete inspection report to ensure that each die can stand the test.

采用CAD/CAM技术，选择高级的合金工具钢。卓越的热处理技术，以及科学的检测手段来制作各种模具。几十年的模具生产制造经验可以满足用户无论是圆形的、异形、浅凹的、斜边形的、分体冲、单体冲的、多冲头的、镀铬的、硬质合金的各种形式的模具制作的需要。我们生产的模具可以适应于各种设备、包括进口的设备。

CAD / CAM technology is used to select advanced alloy tool steel. Excellent heat treatment technology, as well as scientific detection means to make a variety of molds. Decades of experience in mold production and manufacturing can meet the needs of users in various forms of mold production, such as round, special-shaped, shallow concave, bevel, split punch, single punch, multi punch, chrome plated, cemented carbide. Our moulds can be used in all kinds of equipments, including imported ones.



各种类型模具，满足客户各类机型要求。



满足客户各种片剂形状要求



根据客户物料特性，我们可以生产中间镶嵌硬质合金的中模，即能增加耐磨性，相对全硬质合金中模，又降低成本，用心为客户服务！



冲杆专用检验工装，保证模具的精准度。



模具名称 Type of P/D	用途 Application	标准 Standard Reference
国际标注模具 International standard P/D	GZPK系列高速压片机、KORSCH、FETTE、HORN、KILIAN、MANESTY、STOCK、KIKUSHI、HATA GZPK series high speed rotary tablet press.	IPT、EU
普通ZP模具 Normal P/D for ZP series Press	ZP19旋转式压片机、ZP33旋转式压片机、ZP33B旋转式压片机、ZP35旋转式压片机、ZP35A旋转式压片机、ZP35B旋转式压片机、 ZP19 rotary tablet press, ZP33 rotary tablet press, ZP33B rotary tablet press, ZP35 rotary tablet press, ZP35A rotary tablet press, ZP35B rotary tablet press.	GB12253-90
ZPT模具 P/D for ZPT series Press	ZPT130旋转式压片机、ZPT226旋转式压片机、ZPT420B旋转式压片机、ZP420D旋转式压片机 ZPT130 rotary tablet press, ZPT226 rotary tablet press, ZPT420B rotary tablet press, ZPT420D rotary tablet press.	
电池环模具 P/D for battery Press	HATA-FXSI正极环成型机、DZJR-6-1000-1正极环成型机 HATA-FXSI Positive Pole Ring Former, DZJR-6-1000-1 Positive Pole Ring Former	
专用压片机模具 Press oriented P/D	TDP单冲、THP花篮冲压机、ZPW21旋转式压片机、ZPW21A、ZP15旋转式压片机、ZPY15旋转式压片机、ZP25旋转式压片机、ZPW23旋转式压片机、ZPD25多功能旋转式压片机 TDP Single station press, THP Flower Basket press, ZPW21 rotary tablet press, ZPW21A, ZP15 rotary tablet press, ZPY15 rotary tablet press, ZP25 rotary tablet press, ZPW23 rotary tablet press, ZPD25 rotary tablet press	

C 企业简介 Company profile

上海天凡药机制造厂位于风景秀丽的上海佘山国家森林公园、天马山园畔，现已搬迁至新建工厂上海市松江区小昆山镇朱家浜路159号，上海泰博雷特机械有限公司。粉末压制成型成套机械装备制造。开发生产高新技术产品服务客户。

产品品种丰富，综合国内外同类产品优点并相继开发专业自动化、数字控制化系统在压片机上的运用，为提高公司产品符合CGMP和FDA要求，提供了强有力的保证。产品畅销全国各地并远销美国、欧洲、中东及东南亚地区。

主要产品为各高、中、低速压片机和其他固体制剂设备，各类压片机及高速压片机型号齐全，其中高速压片机有GZPK720系列和GZPK370系列八种规格，另外还有包芯压片机，大片径压片机、实验室智能型压片机、单层、双层、三层、五层压片机，等数百种规格系列压片机，全面满足片剂、制剂、及粉末成型厂商的各种要求。公司开发的多款机型是当今市场主流机型。

开发制造各类食品、化工、电子、电池、磁性材料、粉末冶金等行业特殊压片机，在这些行业享有很大的市场份额。

本着科技为上、质量第一、诚信负责、永续经营的宗旨，创建规范化、国际化、持续化的卓越企业，致力让上海泰博雷特机械有限公司成为中国首屈一指制药机械设备供应商，并最终成为国际制药机械粉末压制成型行业的主要品牌企业。

Shanghai Tianfan Pharmacy Machinery Manufacturing, located beside beautiful Shanghai Sheshan National Forestry Park and Tianmashan Park (No. 159, Zhujiajiang Road, Dagang Industrial Area, Songjiang District, Shanghai), Shanghai Tablet Press Mechanical Components Co., Ltd.

The company has continued to manufacture complete mechanical devices for powder press forming for 40 years and developed and fabricated hi-tech products to satisfy customers. With rich product varieties, the company has integrated the advantages of the same products at home and abroad and successively developed professional automation and data control system to be applied on the tablet pressing machines, providing strong assurance to enable the products meet the requirements of CGMP and FDA. The products are popular in domestic markets and exported to USA, Europe, Middle East and Southeast Asia as well.

The Company mainly specializes in manufacturing tablet pressing machines of high speed, medium speed and low speed and other solid preparation devices. It boasts of various tablet pressing machines and high-speed tablet pressing machines, including GZPK 720 series high speed tablet pressing machines with four specifications, and tablet pressing machine series of over ten types such as core-spun tablet pressing machine, large-diameter tablet pressing machine and laboratory smart tablet pressing machine, which basically meet various requirements of troche preparation manufacturers. Many machine models developed by the Company become the mainstream models of current market.

The Company has been developing and manufacturing special tablet pressing machines for such industries as food, chemical engineering, electronics, battery magnetic material and powder metallurgy, with large market share in these industries.

With the philosophy of Technology Orientation, Quality First, Integrity and Responsibility, Sustainable Operation, the Company dedicates to establish an international enterprise with standard and sustainable operation capability, and turn Tianfan into a No.1 pharmacy machinery supplier in China, and finally a main brand enterprise in international powder pressing machine industry.

D 历年大事记 Dary of events over the years

1978年，成立上海天马制药机械配件厂。（集体企业）

1980年，改名为上海天马制药机械厂。（集体企业）

1999年，十二月底，原上海天马制药机械厂企业改制。

2000年，改制后由原有团队，核心技术工程人员，组建成立上海天凡药机制造厂。

2001年，建立第二制造部精加工一车间。

2002年，建立第二制造部总装一车间。

2003年，建立第二制造部精加工二车间。

2004年，建立第二制造部总装二车间。

2005年，产品生产、开发获得了中国CQM ISO-9001质量体系管控。

2005年，根据GMP要求研发生产高速直径更大ZPD系列压片机。

2007年，我们的产品获得欧盟CE认证。

2007年，加入CAPE中国制药装备协会会员。

2008年，获得国际认证联盟IQNet质量管理体系证书。

2008年，获得美国ORI质量管理体系证书。

2011年，建立压片机产品展示中心。

2011年，“天福”“天马”注册商标，获得中国中轻质量保证中心

《中国著名品牌》

2011年，上海天凡药机制造厂；获得中国中轻质量保证中心

《质量、服务、信誉、AAA企业》

2013年，建立高端压片机总装工厂，实现无尘化装配管理。

2014年，2000平方米的现代化厂房正式启用，固体制剂、片剂、粉末成型生产线，无人化全自动连线生产模式正式启动。

2015年9月，天凡药机新建工厂建造正式竣工完成，建筑使用面积15300平方米。

2015年12月，天凡药机关闭天马山工厂整体搬迁新建工厂内。天凡药机步入企业发展新篇章。



天凡药机
泰博雷特

目录

■ GZPK265系列高速压片机 -	01
■ GZPK280系列高速压片机 -	03
■ GZPK370系列高速压片机 -	05
■ GZPK370i系列高速压片机 -	07
■ GZPK561系列全自动高速压片机 -	11
■ GZPK620系列双出料高速压片机 -	13
■ GZPK660系列全自动双出料高速压片机 -	15
■ GZPK720i系列全自动双出料高速压片机 -	17
■ GZPK720系列全自动双出料高速压片机 -	19
■ GZPK1060系列全自动三出料高速压片机 -	21
■ GZP540系列中速压片机 -	23
■ ZP、ZPT226D、Di系列旋转式压片机 -	25
■ ZPTX226D、Di系列旋转式压片机 -	27
■ ZPY226PLC系列旋转式压片机 -	29
■ ZPSS226PLC双层旋转式压片机 -	31
■ ZPS226D双层旋转式压片机 -	33
■ ZP、ZPT420D、Di系列旋转压片机 -	35
■ ZPTK420Di系列旋转压片机 -	37
■ ZP、ZPTB420D、Di系列旋转压片机 -	39
■ ZP、ZPTX420D、Di系列旋转压片机 -	41
■ ZPTX420G系列旋转压片机 -	43
■ ZPW20/22包芯机 -	45
■ GZP420Di系列旋转式压片机 -	47
■ GZP520i系列旋转式压片机 -	49
■ GZPK580i系列高速旋转式压片机 -	51
■ TP40磁性材料专用压机 -	53
■ DP系列IPTD单冲压片机 -	55

CONTENTS



天凡药机
泰博雷特

目录

■ TDP系列单冲压片机 -	57
■ DP系列单冲压片机 -	58
■ THP系列单冲压片机 -	59
■ ZP老牌系列旋转式压片机 -	60
■ ZP、ZPT130系列旋转式压片机 -	61
■ ZP、ZPT168系列旋转式压片机 -	62
■ ZP、ZPT198系列旋转式压片机 -	63
■ ZP、ZPT226II-19II系列旋转式压片机 (上驱动) -	64
■ ZP、ZPT320D、Di系列旋转式压片机 -	65
■ ZP、ZPT340D、Di系列旋转式压片机 -	66
■ ZP420D-125D系列旋转式压片机 -	67
■ ZP420A/B-35A/B系列旋转式压片机 -	68
■ ZPT420-39I系列旋转式压片机 -	69
■ ZP、ZPT420B-33B系列旋转式压片机 (上驱动) -	70
■ ZP、ZPT420-ZPW15G系列旋转式压片机 -	71
■ ZP、ZPT420-ZPS29D系列旋转式压片机 -	72
■ ZP、ZPT450-ZPW17E系列旋转式压片机 -	73
■ ZP475-ZP25K系列旋转式压片机 -	74
■ ZP、ZPT420-15G系列旋转式压片机 -	75
■ ZPXD系列旋转式压片机 (上驱动) -	76
■ ZPCD600系列旋转式压片机 (上驱动) -	77
■ ZP、ZPT420D-TF55系列旋转式压片机 -	78
■ ZP、ZPT680、68I系列旋转式压片机 -	79
■ ZP、ZPT680C、Ci系列旋转式压片机 -	81
■ ZP、ZPT1180系列旋转式压片机 -	83
■ ZP420系列旋转式脆面机 -	85
■ ZP、ZPT420增塌压机 (专用机) -	86
■ 泡腾片专用压机 -	87
■ PRC600普洱茶块机 -	88
■ CF型物料吹粉机 -	89
■ QVC真空上料机 -	90
■ GJ-VIII金检仪 -	91
■ HRD-100高速筛片机 -	91
■ SZS230上旋式筛片机 -	92
■ XCG滤筒吸尘柜 -	92

CONTENTS

GZPK265-16/23/30
GZPT265-16/23/30



GZPK系列高速压片机 (265) GZPT系列经济型高速压片机 (265)

GZPK Series High-speed Tablet Press
GZPT Series Economic-type High-speed Tablet Press

技术特点

- 触摸屏+PLC控制, 主电机、加料电机变频调整, 转速连续可调, 并有片重上、下限控制功能。
- 具有主压力平均值显示、自动显示故障功能, 并自动停机、报警及帮助菜单。
- 密闭的双叶轮强迫加料, 解决了普通压片机靠重力下料不足, 粉尘过多及交叉污染问题。加料器底板表面与中冲盘上表面间隙式配合 (间隙 $\leq 0.03\text{mm}$) 及刮粉器的作用, 使用、漏粉不再存生, 同时适用于原粉和过细物料的压片, 物料的利用率且有利片重的稳定。

技术参数 Technical parameters

参数 Data	型号 Model	GZPK-16 GZPT-16	GZPK-23 GZPT-23	GZPK-30 GZPT-30
冲头数	No. of stations	16	23	30
冲头类型	Tooling type	D	B	BB
产量范围(片/小时)	Output range (Tablet s/h)	21000-105000	30000-151000	39000-198000
转速范围(转/分钟)	Rotation speed range (rpm)	22-110rpm		
主压力	Main pressure	100KN		
预压力	Pre-pressure	14KN		
最大压径	Max tablet diameter	$\phi 25\text{mm}$	$\phi 16\text{mm}$	$\phi 13\text{mm}$
异形片最大长度	Max length of Irregular tablet	25mm	19mm	16mm
冲模直径	Diameter of die	$\phi 38.1\text{mm}$	$\phi 30.16\text{mm}$	$\phi 24\text{mm}$
最大填充深度	Max filling depth	20mm		
冲杆直径	Diameter of punch	$\phi 25.35\text{mm}$	$\phi 19\text{mm}$	
冲头长度	Length of punch	133.6mm		
冲头所在圆周直径	Pitch circle diameter	265mm		
主电机功率	Main motor power	5.5kW		
重量	Weight	1200kg		
设备外形尺寸	Dimension	700x1000x1750mm		
备注		最高产量是指片型为圆型, 片径最小、转速最高情况下实现的最大产量。片径、片型不同, 产量有所不同。		

GZPK280-20/24/30



GZPK系列高速压片机 (280)

GZPK Series High-speed Tablet Press

技术特点

- 可移动转盘使得模具更换清洗更加灵活, 有效提高生产效率。
触摸屏+PLC控制, 主电机、加料电机变频调整, 转速连续可调。
- 具有主压力平均值显示、自动显示故障功能, 并自动停机、报警及帮助菜单。
- 密闭的双叶轮强迫加料, 加大药粉的填充能力, 有效防止粗、细药粉的分离现象。
四面可视玻璃可打开, 清理无死角。
主预压均可达到100KN, 压片压力大, 压片效果更好, 尤其适合难压物料。

技术参数 Technical parameters

参数 Data	型号 Model	GZPK-20	GZPK-24	GZPK-30
冲头数	No. of stations	20	24	30
冲具类型	Tooling type	D	B	BB
产量范围(片/小时)	Output range (Tablet s/h)	26400-132000	31680-158400	39600-198000
转速范围(转/分钟)	Rotation speed range [rpm]	22-110rpm		
主压力	Main pressure	100KN		
预压力	Pre-pressure	100KN		
最大压径	Max tablet diameter	φ 25mm	φ 16mm	φ 13mm
异形片最大长度	Max length of irregular tablet	25mm	19mm	16mm
冲模直径	Diameter of die	φ 38.1mm	φ 30.16mm	φ 24mm
最大填充深度	Max filling depth	20mm		
冲杆直径	Diameter of punch	φ 25.35mm	φ 19mm	
冲头长度	Length of punch	133.6mm		
冲头所在圆周直径	Pitch circle diameter	280mm		
主电机功率	Main motor power	7.5kW		
重量	Weight	2500kg		
设备外形尺寸	Dimension	900 x 1160 x 1875mm		
备注		最高产量是指片型为圆型, 片径最小、转速最高情况下实现的最大产量。片径、片型不同, 产量有所不同。		

GZPK370-26/32/40
GZPT370-26/32/40



强迫加料系统加大药粉的填充能力，有效防止粗、细药粉的分离现象。
所有部件的固定、拆卸、清洗方便快捷。

Force-feeding system is capable to increase the feeding ability and prevent thick granules separating from fine granules effectively.
All the parts are easy to be fixed, disassembled and cleaned.

GZPK系列高速压片机 (370) GZPT系列经济型高速压片机 (370)

GZPK Series High-speed Tablet Press
GZPT Series Economic-type High-speed Tablet Press

共同特性

- 采用PLC控制，具有自动保护功能
- 触摸屏操作，界面简单易懂
- 具有强迫加料装置，对药粉适应性性强
- 具有中央自动润滑系统
- 具有主压、预压两次压力成型

Common Features

- Adopts PLC control with auto protective function.
- Touch screen operation. Operation menu is easy to understand
- Force-feeding unit with a good applicability to powder;
- Central auto lubrication system;
- Main and pre-pressing, tablets formed twice.

GZPK系列独有特点

- 可以实现药粉的自动补偿
- 对每个冲头的压力进行监测并在触摸屏上显示，出片装置设有成品和废品两个通道，废片可被剔除

Unique features of GZPK series

- Auto compensation of powder;
- Monitoring pressure of each punches and displays the pressure on the touch screen. There are two chutes for qualified tablets and defective tablets. Defective tablets can be rejected from one chute.

技术参数 Technical parameters

参数 Data	型号 Model	GZPT26 GZPK26	GZPT32 GZPK32	GZPT40 GZPK40	GZPT50 GZPK50
冲头数	No. of stations	26	32	40	50
冲模类型	Tooling type	D	B	BB	TF16
产量范围(片/小时)	Output range (Tablet s/h)	20000-171600	25000-211200	31000-264000	38000-325000
转速范围(转/分钟)	Rotation speed range (rpm)	13-110rpm			
最大主压制力	Main pressure	100KN			
最大预压制力	Pre-pressure	16KN			
最大填充深度	Filling depth	20mm	16mm		
片剂厚度范围	Max length of irregular tablet	1-8mm			
最大压片直径	Max tablet diameter	φ 25mm	φ 16mm	φ 13mm	φ 10mm
最大异形长轴尺寸	Max irregular length	<25mm	<19mm	<16mm	<11mm
中模直径	Diameter of die	φ 38.1mm	φ 30.16mm	φ 24mm	φ 19mm
冲杆直径	Length of punch	φ 25.35mm	φ 19mm	φ 16mm	φ 16mm
冲头长度	Punch length	133.6mm			
工作噪音	Noise	≤ 70db			
总功率	Main motor power	7.5kW			
设备外形尺寸	Dimension	890 x 1100 x 1750mm			
设备净重	Weight	1800kg			
备注		最大产量是指片型为圆形，片径最小，转速最高情况下实现的最大产量。片径、片型不同，产量有所不同。			

GZPK3701-26/32/40



GZPK3701-26/32/40



GZPK370i-26/32/40



GZPK系列高速压片机 (370i)

GZPK Series High-speed Tablet Press

共同特性

- 采用PLC控制，具有自动保护功能
- 触摸屏操作，界面简单易懂
- 具有强迫加料装置，对药粉适应性强
- 具有中央自动润滑系统
- 具有主压、预压两次压力成型
- 无手轮操作，压轮位置调整、计量调整都采用电机控制，调整速度和精度都得到很大的提升。

Common Features

- Adopts PLC control with auto protective function.
- Touch screen operation. Operation menu is easy to understand.
- Force-feeding unit with a good applicability to powder.
- Central auto lubrication system.
- Main and pre-pressing, tablets formed twice.
- No handwheel operation, the position adjustment and metering adjustment of pressure wheel are all controlled by motor, the speed and precision of adjustment are greatly improved.

GZPK系列独有特点

- 可以实现药粉的自动补偿
- 对每个冲头的压力进行监测并在触摸屏上显示，出片装置设有成品和废品两个通道，废片可被剔除

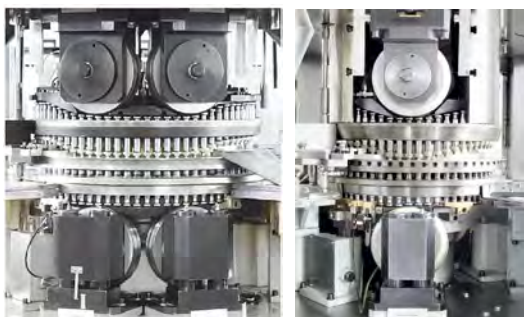
Unique features of GZPK series

- Auto compensation of powder.
- Monitoring pressure of each punches and displays the pressure on the touch screen. There are two chutes for qualified tablets and defective tablets. Defective tablets can be rejected from one chute.

技术参数 Technical parameters

参数 Data	型号 Model	GZPK26	GZPK32	GZPK40i	GZPK50i
冲头数 No. of stations		26	32	40	50
冲模类型 Tooling type		D	B	BE	TF16
产量范围(片/小时) Output range (Tablet s/h)		20000-171600	25000-211200	31000-264000	38000-325000
转速范围(转/分钟) Rotation speed range (rpm)		13-110rpm			
最大主压制力 Main pressure		100kN			
最大预压制力 Pre-pressure		16kN			
最大填充深度 Max filling depth		20mm	16mm		
片剂厚度范围 Tablet thickness range		1-8mm			
最大压片直径 Diameter of die		φ 25mm	φ 16mm	φ 13mm	φ 10mm
最大异形片长轴尺寸 Max length of irregular tablet		<25mm	<19mm	<16mm	<11mm
中模直径 Diameter of die		φ 39.1mm	φ 30.16mm	φ 24mm	φ 19mm
冲杆直径 Diameter of punch		φ 25.35mm	φ 16mm	φ 13mm	φ 10mm
冲杆长度 Length of punch		133.6mm			
工作噪音 Noise		≤ 70dB			
总功率 Main motor power		7.5kW			
设备外形尺寸 Dimension		820 × 1100 × 1750mm			
设备净重 Weight		1800kg			
备注		最高产量是指片剂为圆形，片径最小，转速最高情况下实现的最高产量。片径、片型不同，产量有所不同。			

GZPK561-41/51/61/79



采用三组相同大小的压轮压制同一个药片，三组压轮的压力都可以达到100KN，极大的延长了药片的成型时间。三组压轮技术为双层片的压制提供了新的解决方案。

Each tablet is pressed by 3 same size rollers. Each roller pressure can reach 100KN, which largely extended the tablet forming time. 3-roller technology provides a new solution for pressing two layers tablets.

GZPK全自动高速压片机（561系列）

GZPK Series Automatic High-speed Tablet Press (561)

技术特点

- 设备具有冲盘可更换功能，方便拆卸清洗或者产品的更换，提高了药片生产效率；
- 设备采用垂直下料技术，大直径的料筒解决了药粉难流动的问题，更适合纯粉直接压片；
- 三个压轮位置调整，计量调整都采用全伺服技术，调整速度和调整精度都得到很大的提升；
- 三组压轮的压力都可以显示，方便调整；
- 无手轮操作，压片的信息全部在触摸屏上显示、调整；
- 具有电子签名和电子记录功能，符合FDA要求。

Technique advantages

- Interchangeable turret. Convenient for machine clean and change over, which improves the production efficiency;
- Vertical powder feeding and large diameter hopper can handle powder with bad fluidity. suitable for pressing not granulated powder;
- Full servo control for press rollers position and dosing adjustment. High precision;
- Pressure of all the 3 roller can be displayed. convenient for adjustment;
- No hand wheel operation. All operation information can be shown and adjusted on screen;
- Equipped with electronic records and electronic signatures, which meets the FDA'S requirement.

技术参数 Technical parameters

参数 Data	型号 Model	GZPK-41	GZPK-51	GZPK-61	GZPK-79
冲头数	No. of stations	41	51	61	77
冲模类型	Tooling type	D	B	BE	TF-16
转速范围(转/分钟)	Turret rotation speed (R.P.M)	9-90			
产量范围(片/小时)	Output range (Tablet s/h)	22140-	27540-	32940-	42660-
		221400	275400	329400	426600
主电机功率	Main motor power	11KW			
1站压力	First station pressure	100KN			25KN
2站压力	Second station pressure	100KN			25KN
3站压力	Third station pressure	100KN			25KN
最大压片直径	Max. tablet diameter	25mm	16mm	13mm	10mm
异形片最大长度	Max. length of Irregular tablet	25mm	19mm	16mm	11mm
第一层最大填充深度	Max. filling depth for first layer	19mm	19mm	15mm	15mm
第二层最大填充深度	Max. filling depth for second layer	6-8			
最大片剂厚度	Max. tablet thickness	12mm			
主机外形尺寸	Dimension of machine	1180 x 1180 x 2035mm			
电控柜外形尺寸	Dimension of control cabinet	890 x 510 x 1200mm			
重量	Weight	4000kg			
备注		最高产量是指片型为圆型，片径最小、转速最高情况下实现的最大产量。片径、片型不同，产量有所不同。			

GZPK620-45/55/65



GZPK620双出料高速旋转式压片机

GZPK620 Series Double Discharge High-speed Rotary Tablet Press

GZPK620双出料高速旋转式压片机，该机器采用双强迫加料双出片结构设计，冲盘旋转一周完成2次充填、计量、预压、主压和出片等过程，最高产量可达到58万片/小时。设备工作性能稳定、机器运转平稳、噪声低。更换一套导轨，可压双层片。

主要特点

- 符合GMP规范要求，机构紧凑，性能可靠，操作简单。
- 人机界面触摸屏软件操作控制，操作方便，具有故障点自诊断功能。
- 触摸屏液压控制主压轮压力和预压轮压力。
- 片重自动检测功能，出现废片自动识别剔除功能。
- 上下冲过紧保护、电控系统保护、主机过载停机保护、强迫加料电机过载保护、气源压力过低保护、系统故障全自动报警保护。
- 自动润滑系统。
- 生产信息均可显示、打印并储存功能。

技术参数 Technical parameters

参数 Data	型号 Model	45	55	65
冲头数	No. of stations	4E	5E	6E
最大生产能力(万片/小时)	Output range (Tablet/s/h)	4C	4S	5E
最大填充深度	Max. filling depth	20mm	16mm	
最大主压制力	Max. Major Pressure (kN)	100kN		
最大预压制力	Max. Pre-pressure (kN)	16kN		
片剂厚度范围	Max. length of irregular tablet	1~8mm		
圆片片径范围	Round tablet diameter	25mm	16mm	13mm
异形片长径范围	Max. length of irregular tablet	< 25mm	< 17mm	< 14mm
片重差异	Weight tolerance	± 3%		
工作噪音	Noise	≤ 80dB		
总功率	Motor Power (kW)	11kW		
设备外形尺寸	Dimension of machine	1400 × 1500 × 1900		
设备净重	Weight	3300 kg		
备注	最高产量是指片型为圆型，片径最小、转速最高情况下实现的最大产量。片径、片型不同，产量有所不同。			

GZPK660-45/55/75



GZPK660全自动双出料高速压片机

GZPK660 Series Automatic Double Discharge High-speed Tablet Press

GZPK660双出料高速旋转式压片机，该机器采用双强迫加料双出片结构设计，冲盘旋转一周完成2次充填、计量、预压、主压和出片等过程。设备工作性能稳定、机器运转平稳、噪声低。更换一套导轨，可压双层片。

主要特点

- 双层三轮填料系统，均衡药粉密度。
 - 人机界面触摸屏软件操作控制，操作方便，具有故障点自诊断功能。
 - 触摸屏液压控制主压轮压力和预压轮压力，噪音低。
 - 无手轮控制，伺服电机控制充填系统，反应速度快。
 - 片重自动检测功能，出现废片自动识别剔除功能。
 - 上下冲过紧保护、电控系统保护、主机过载停机保护、强迫加料电机过载保护、系统故障全
 - 自动报警保护。
 - 全自动润滑系统，通过自动控制保证各润滑点得到定时定量的润滑。
- 生产信息均可显示、打印并储存功能。

技术参数 Technical parameters

参数 Data	型号 Model	45	47	55	75
冲头数	No. of stations	4E	47	55	75
最大生产能力(片/小时)	Output range (Tablets/h)	43200	45120	52800	72000
最大填充深度	Max. filling depth	20mm		18mm	
最大主压制力	Max. Major Pressure (kn)	100KN			
最大预压制力	Max. Pre-pressure (kn)	20KN			
片剂厚度范围	Max length of Irregular tablet	1~8mm			
圆片直径范围	Round tablet diameter	25mm	16mm	13mm	
异形片长边范围	Max length of Irregular tablet	<25mm	<18mm	<16mm	
片重差异	Weight tolerance	± 3%			
工作噪音	Noise	≤ 80dB			
总功率	Motor Power (kw)	11.5~13KW			
设备外形尺寸	Dimension of machine	1260 x 1260 x 1950			
设备净重	Weight	3950 kg			
备注		最高产量是指片型为圆型，小片径、转速最高情况下实现的最大产量。片径、片型不同，产量有所不同。			

GZPK720i-51/65/83

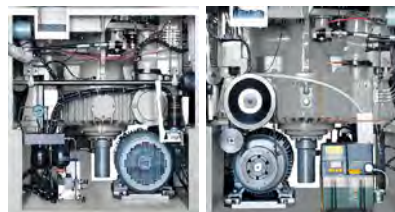


符合GMP要求，能压制双层双色片、环形片、圆形片、刻字片和异形片，适合于制药、食品、化工等行业的高效、精密压片。
主压、预压两次成型；
具有中央自动润滑系统；
双出料口，两边出片，生产高效率。
整机无手轮，同步电机自动驱动，完全实现生产自动化；
电控柜独立于主机，电气控制区与生产区分离，安全与卫生系数大大提高；
采用编码器进行计数、计量，显示控制精准。

Meets GMP requirement can press two layers tablets with different colors, annular tablets, round tablets, engraved tablets and irregular tablets. Available for pharmaceutical factory, food and chemical industries.
Tablets formed Twice by main pressing and pre-pressing.
Central auto lubrication system.
Double-sided output, high efficiency.
There is no hand-wheel with machine, automatic drive by synchronous motor. It can complete realize automatic production.
Separate control cabinet to operate the machine, separated production area from operating area, ensure the safety for operator and sanitation for production.
Adopts encoder to counting, measuring, display control accurate.

GZPK全自动双出料高速压片机（720i系列）

GZPK Series Automatic Double Discharge High-speed Tablet Press (720i)



进口液压泵站支撑主压、预压，压片平稳、噪声低；
配置有过载保护装置，当压力过载时，能自动停机；
便于拆卸的结构，可维护性好。

Imported hydraulic pump unit sustains main pressure and prepressure, process of pressing goes smoothly with low noise;
Equipped with protective unit of overloading, auto stopped while pressure overloaded.
An easy disassembled structure has high maintainability.



强迫加料装置控制药粉流动和填充，确保加料精度；
加料器易拆装，平台易调整；
压片室无死角结构，便于观察，清洁。

Force-feeding device controls the flow of powder and ensures the accuracy of feeding.
Feeder is easy to be disassembled, and the platform is easy to be regulated.
No dead area in press chamber and easy to be observed and cleaned.

技术参数 Technical parameters

参数 Data	型号 Mode	GZPK-51	GZPK-65	GZPK-83
冲头数	No. of stations	51	65	83
冲模类型	Tooling type	D	B	BB
产量范围(片/小时)	Output range (Tablet s/h)	61200-61200C	62400-62400C	79600-79600C
转速范围(转/分钟)	Rotation speed rang (rpm)	e-60rpm		
主压力	Main pressure	100KN		
预压力	Pre-pressure	16KN		
最大片径	Max. tablet diameter	φ25mm	φ16mm	φ13mm
异形片最大长度	Max. length of Irregular tablet	25mm	19mm	16mm
冲模直径	Diameter of die	φ38.1mm	φ30.16mm	φ24mm
最大填充深度	Max. filling depth	20mm	20mm	16mm
冲杆直径	Diameter of punch	φ25.35mm	φ19mm	φ19mm
冲头长度	Length of punch	132.6mm		
冲头所在圆周直径	Pitch circle diameter	720mm		
主电机功率	Main motor power	11kW		
重量	Weight	3380kg		
外形尺寸	Dimensions	1294 × 1500 × 2000mm		
备注		最高产量是指片型为圆形，片径最小、转速最高情况下实现的最大产量。片径、片型不同，产量有所不同。		

GZPK720-51/65/73/83



GZPK系列产品具有高精度、高速度，自动化程序控制等优点，是大批量片剂生产的理想设备。先进合理的设计是卓越品质产品的基础，多年高速压片机制造开发经验，与高科技技术相结合，新型的设计理念使我们研发生产了GZPK系列双出料高速压片机。实现了产品生产的标准化，模块化，集团化，系列化。

能压制双层片，环形片，圆形片，刻字片和异形片，完全符合GMP要求，适用于制药，食品，化工等行业高效，精密压片。

GZPK全自动双出料高速压片机 (720)

GZPK Series Automatic Double Discharging High-speed Tablet Press (720)

特性

- 无手轮，系统控制调节
- 全自动集中润滑系统
- 特殊的防油、防尘、防噪系统
- 采用高清晰，隔离视窗设计
- 压片室360°无死角全开启结构，清洁操作，维护方便
- 特有的四柱框架结构，确保机械稳定耐用
- 冲盘热处理工艺与国际同步，寿命超长



主要特点：（CGMP可溯源机型具备的功能）

- 采用PLC控制，具有自动保护功能（超压、过载、急停装置）
- 复压式，全封闭结构
- 采用变频调整
- 人机界面，操作方便友好
- 数字显示主压力、出片力、片剂厚度、填充深度及转速
- CE配置可选择
- 具有压制片剂数据屏幕打印功能

技术参数 Technical parameters

参数 Data	型号 Model	GZPK-51	GZPK-65	GZPK-83	GZPK-99
冲头数	No. of stations	51	65	83	99
产量范围(片/小时)	Output range (Tablet s/h)	47000-470000	62400-624000	78600-786000	85000-850000
转速范围(转/分钟)	Rotation speed range (rpm)	8-80rpm			
主压力	Main pressure	100KN			
预压力	Pre-pressure				
冲具型式	Tooling type	D	B	BB	TF-1E
最大片径	Max. tablet diameter	φ 28mm	φ 16mm	φ 13mm	φ 10mm
异形片最大长度	Max length of irregular tablet	25mm	19mm	16mm	11mm
冲模直径	Diameter of die	φ 38.1mm	φ 30.16mm	φ 24mm	φ 24mm
最大填充深度	Max filling depth	20mm	18mm	18mm	18mm
主电机功率	Main motor power	11kW			
冲杆直径	Diameter of punch	25,35mm	19mm		16mm
重量	Weight	5500kg			
主机外形尺寸	Dimension of machine	1300 × 1300 × 2000mm			
电控柜外形尺寸	Dimension of control cabinet	890 × 500 × 1200mm			
备注		最高产量是指片型为圆型，片径最小，转速最高情况下实现的最大产量。片径、片型不同，产量有所不同。			

GZPK1060-76/95/113/122



GZPK全自动三出料高速压片机 (1060)

GZPK Series Automatic Tripe Rotary High Speed Tablet Press Machine (1060)

特性

- 三侧加料，三侧压片，三侧出片压片技术，生产效率高
- 双层三轮填料系统，均衡药粉密度
- 特殊的防油、防尘、防噪系统，独立电控柜，安全与卫生系数大大提高
- 无手轮控制，伺服电机控制充填系统，反应速度快；主压和预压机构采用同步电机，由编码器测算，数据准确
- 自动调整填充量来控制片重，并有填充过大，填充过小和冲头压力单值上下限超差报警功能，具有片重超差剔除功能
- 具有压制片剂数据屏幕打印功能

Applications:

- Feeding powder in three hoppers. Tablets compressed at three sides. Tablets ejected through three sides chute. High production efficiency.
- Tri-wheeled double deck feeding system. To ensure the uniformity of feeding.
- Special oil, dust and noise prevention system. Separate control cabinet to operate the machine; ensures the safety for operator and sanitation for production.
- No handwheel control. The filling system use servo motor control which has fast reaction speed. The main pressure and pre-pressure use synchronous motor control. The location of main pressure and pre-pressure measured through the encoder, accurate data and reduce manual errors.
- Can adjust filling volume to control tablet weight. If over-filling or less-filling or the punch force over-limit, the machine will give alarm. The over-weight and less-weight tablets can be rejected.
- With tablet data screen printing function

技术参数 Technical parameters

参数 Data	型号 Model	GZPK-76	GZPK-95	GZPK-113	GZPK-122
冲头数	No. of stations	76	95	113	122
最大产量(片/小时)	Max output (Tablets/h)	69700	87200	103700	150000
最大转速(转/分钟)	Max speed (rpm)	51rpm			68rpm
主压力	Main pressure	100KN			
预压力	Pre-pressure				
冲具型式	Tooling type	D	E	BE	BBS
最大片径	Max tablet diameter	φ 25mm	φ 19mm	φ 13mm	φ 11mm
不规则片最大长度	Max length of Irregular tablet	25mm	19mm	16mm	13mm
冲模直径	Diameter of die	φ 38.1mm	φ 30.16mm	φ 24mm	φ 21mm
最大填充深度	Max filling depth	20mm	20mm	16mm	16mm
主电机功率	Main motor power	18.5kW			
冲杆直径	Diameter of punch	25.35mm	19mm		
重量	Weight	8000kg			
主机外形尺寸	Dimension of machine	1720 x 1720 x 2185mm			
备注		最高产量是指片型为圆形，片径最小，转速最高情况下实现的最大产量。片径，片型不同，产量有所不同。			

GZP540-61/57/47/39



GZP540系列双出料压片机

GZP540 Series Double Discharge Tablet Press

产品介绍

GZPK540系列旋转压片机是一种系列化产品。主要用于制药行业，亦能用于化工、食品、电子等行业。它可以生产各种规格的圆形片、特殊形状的异形片和双面刻字片。

主要特点

- 准高速，双出片，ZP61的产量可达35万。
- 最大主压力可达100KN，最大预压力30KN，高于其他普通旋转压片机。
- 经过工业造型设计，外型新颖美观、大方简洁。
- 符合GMP要求，结构紧凑，性能可靠，操作简便，清洁和更换产品快捷。
- 人机界面，操作友好方便。具有片厚显示、填充显示。
- 稀油润滑采用先进的容积式润滑系统。使各润滑点的供油更精准可靠。
- 拆卸方便的强迫加料器。

技术参数 Technical parameters

参数 Data	型号 Model	ZP61	ZP57	ZP47	ZP39
冲模数 Stations		61	57	47	39
冲具型式 Model		EU19 BBS	TSM19 (EU19) BB	TSM19 (EU19) B	TSM10 [®] (EU1 [™]) D
最大片径 Max. Tablet Diameter (mm)		11	14	18	25
最大填充深度 Max. Filling Depth (mm)		18			
最大转台转速 Max. Rotation Speed (r/min)		5-48			
最大产量 Tablets/h		35136-35136G	32032-32032B	27027-27072G	22464-22464C
最大主压力 Max. Main Pressure (kn)		100			
最大预压力 Max. Pre-pressure (kn)		30			
工作电压 Voltage (v/hz)		AC 380/50三相			
主电机功率 Main Motor Power (kw)		7.5			
机器占地面积 Machine Area (mm)		1300 x 1100			
机器高度 Machine Height (mm) Alarming light included		2160 (包括报警灯)			
机器重量 Machine Weight (kg)		3000			
备注		最高产量是指片型为圆形、片径最小、转速最高情况下实现的最大产量。片径、片型不同，产量有所不同。			

ZP、ZPT226D、DI



ZP、ZPT226D、DI系列旋转式压片机

ZP、ZPT226D、DI Series Rotary Tablet Press

主要结构特点

- 外围罩壳为全封闭，采用不锈钢材料，符合GMP标准。装有透明玻璃观察窗，能清楚地看到机器的工作情况且能全部打开，易于内部清理和保养。
- 本机压力大，压片片径大，能压制普通、异型、环形等多种形状片剂，特别适合多品种、小批量生产。
- 机电一体化，所有控制器及调节装置集中于机体一侧，易于操作。
- 配有压力过载保护装置，避免机器损坏。
- 采用油浸式润滑的传动机构，密闭在机体下方延长了使用寿命避免了交叉污染。

主要特点：（OGMP可溯源机型具备的功能）

- 采用PLC控制，具有自动保护功能（超压、过载、急停装置）单压式，全封闭结构。
- 采用变频调整。
- 人机界面，操作方便友好。
- 数字显示主压力、片剂厚度、填充深度及转速。
- CE配置可选择。
- 具有压制片剂数据屏幕打印功能。
- 片剂超差保护功能，使片剂生产片剂更精准。

This machine is a single-press type, continuous automatic tablet press for pressing granular raw materials into tablets. It is mainly used in pharmaceutical industry and also the chemical, food, electronic, plastic and metallurgical industries.

Characteristics

- The outside part of the machine is fully-enclosed, and it is made of stainless steel, meeting the G. M. P requirement.
- It has transparent windows so that press condition can be observed clearly and the windows can be opened. Cleaning and maintenance is easier.
- The machine can press not only round tablets but also different geometrical shape tablets, double-layered and annular tablets, the tablets may have the impressed letters on both sides.
- All the controller and devices are located in one side of the machine, so that it can be easier to operate.
- An overload protection unit is included in the system to avoid the damage of the punches and apparatus, when overload occurs. The machine's worm gear drive adopts fully-enclosed oil-immersed lubrication with long service-life, prevent cross pollution.

技术参数 Technical parameters

参数 Data	型号 Model	ZPT226DI-17DI		
冲模数 Dies (sets)		17	18	21
工作压力 Max. Pressure (kn)		60	60	60
最大片径 Max. Dia of Tablet (mm)		20	12	11
充填深度 Max. Depth of Fill (mm)		15	15	15
压片厚度 Max. Thickness of Tablet (mm)		6	6	6
产量 Max. Production Capacity (pc/h)		40000	45600	50000
电压 Voltage (v/hz)		380	380	380
功率 Motor Power (kw)		3	3	3
尺寸 Overall Size (mm)		615 x 690 x 1415	615 x 690 x 1415	615 x 690 x 1415
重量 Weight (kg)		850	850	850

ZPTX226D、Di



ZPTX226D、Di系列旋转式压片机

ZPTX226D、Di Series Rotary Tablet Press

主要结构特点

- 外围罩壳为全封闭，采用不锈钢材料，符合GMP标准。装有透明玻璃观察窗，能清楚地看到机器的工作情况且能全部打开，易于内部清理和保养。
- 本机为复压式压机，先经过预压轮，后由主压压制成型，能压制普通，异形，环形等多种形状片剂，特别适合多品种，小批量生产。
- 机电一体化，所有控制器及调节装置集中于机体一侧，易于操作。
- 配有压力过载保护装置，避免机器损坏。
- 采用油浸式润滑的传动机构，密闭在机体下方延长了使用寿命避免了交叉污染。

主要特点：（GMP可溯源机型具备的功能）

- 采用PLC控制，具有自动保护功能（超压、过载、急停装置）单压式，全封闭结构。
- 采用变频调整。
- 人机界面，操作方便友好。
- 数字显示主压力、片剂厚度、填充深度及转速。
- CE配置可选择。
- 具有压制片剂数据屏打印功能。
- 片剂超差保护功能，使片剂生产片剂更精准。

This machine is a single-press type, continuous automatic tablet press for pressing granular raw materials into tablets. It is mainly used in pharmaceutical industry and also the chemical, food, electronic, plastic and metallurgical industries.

Characteristics

- The outside part of the machine is fully-enclosed, and it is made of stainless steel, meeting the G. M. P requirement.
- It has transparent windows so that press condition can be observed clearly and the windows can be opened. Cleaning and maintenance is easier.
- The machine can press not only round tablets but also different geometrical shape tablets, double-layered and annular tablets, the tablets may have the impressed letters on both sides.
- All the controller and devices are located in one side of the machine, so that it can be easier to operate.
- An overload protection unit is included in the system to avoid the damage of the punches and apparatus, when overload occurs. The machine's worm gear drive adopts fully-enclosed oil-immersed lubrication with long service-life, prevent cross pollution.

技术参数 Technical parameters

参数 Data	型号 Model	ZPT226Di-17Di		
冲模数 Dies (sets)		17	18	21
工作压力 Max. Pressure (kn)		100	100	80
预压压力 Max.Pre-pressure(kn)		20	20	20
最大片径 Max. Dia of Tablet (mm)		20	12	11
充填深度 Max. Depth of Fill (mm)		18	18	18
压片厚度 Max. Thickness of Tablet (mm)		6	6	6
产量 Max. Production Capacity (pc/h)		40000	45600	50000
电压 Voltage (v/hz)		380	380	380
功率 Motor Power (kw)		3	3	3
尺寸 Overall Size (mm)		615 × 890 × 1415	615 × 890 × 1415	615 × 890 × 1415
重量 Weight (kg)		850	850	850

ZPY226PLC-24/18/10/8



ZPY226PLC系列旋转式压片机 ZPY226PLC Series Rotary Tablet Press



用途

- 单压式，全封闭结构，符合GMP要求
- 设置预压，主压装置
- 主轴传动，变频调速
- 选用先进的蜗轮减速器配套
- 转台装有推力轴承，自润滑轴承
- 数字显示
 - A、显示当前主压力
 - B、显示当前片剂厚度
 - C、显示当前充填量大小
 - D、显示当前预压轮位置
 - E、显示当前出片力
 - F、显示当前转台转速
- 触摸式操作按钮
- 保护报警功能
 - A、电机故障保护报警
 - B、超压保护报警
 - C、下冲装卸保护报警
 - D、紧急停机功能

Applications:

- The machine is a single-press type. The outside part of the machine is fully enclosed. It is up to GMP.
- Install pre-pressure, main-pressure
- Main shaft drive, the speed is adjusted by Frequency Conversion
- Advanced turbine retard
- There are thrust shaft, lubricate shaft on turret
- Numerical Show
 - A, Show present main pressure(Max. pressure 60 KN)
 - B, Show present tablet thickness
 - C, Show present filling
 - D, Show present pre-pressure roller seat
 - E, Show present pressure of exit tablets(Max.10 KN)
 - F, Show present speed of turret
- Touching type operation push button
- Protecting and reporting function
 - A, Protecting and reporting for motor breakdown
 - B, Protecting and reporting for exceed pressure
 - C, Protecting and reporting for loading and unloading lower punches
 - D, Emergency stopping function

技术参数 Technical parameters

参数 Data	型号 Model	ZP24	ZP18	ZP10	ZP8
冲模数 Dies (sets)		24	18	10	8
最大主压片力 Max. Major Pressure (kN)		60	60		
最大预压片力 Max. Pre-pressure (kN)		10			
最大压片直径 Max. Dia. of Tablet (mm)		11	13	18	25
最大压片厚度 Max. Thickness of Tablet (mm)		8			
最大填充深度 Max. Depth of Filling (mm)		16			
转台转速 Turret Speed (r/m)		40			
生产能力 Production Capacity (pc/h)		11000-14000	9100-30600		3800-8400
中模直径 Diameter of Die (mm)		22	30.16		38.1
中模高度 Height of Die (mm)		22.22			23.8
冲杆直径 Dia. of Punch (mm)		18			25.35
冲杆长度 Length of Punch (mm)		133.35			
上冲进模深度 Upper punch into die depth range (mm)		2-6			
主电机功率 Motor Power (kw)		2.2			
外形尺寸 Overall Size (mm)		540 × 520 × 1600			
重量 Weight (kg)		880			

ZPSS226-16



本机是一种自动旋转连续压片机器，它将颗粒状原料压制成各种片剂。主要应用于制药工业的片剂生产、同时适用于化工、食品、电子、塑料、粉末冶金等工业部。

This machine is a single-press type, continuous automatic tablet press for pressing granular raw materials into tablets. It is mainly used in pharmaceutical industry and also the chemical, food, electronic, plastic and metallurgical industries.

ZPSS226双色旋转式压片机

ZPSS226 Series Double Color Rotary Tablet Press



主要结构特点

- 外围罩壳为全封闭，采用不锈钢材料，符合GMP标准。
- 装有透明玻璃观察窗，能清楚地看到机器的工作情况且能全部打开，易于内部清理和保养。
- 本机压力大，压片片径大，能压制普通，异形，环形等多种形状片剂，特别适合多品种，小批量生产。
- 机电一体化，所有控制器及调节装置集中于机体一侧，易于操作。
- 配有压力过载保护装置，避免机器损坏。
- 采用油浸式润滑的传动机构，密闭在机体下方延长了使用寿命避免了交叉污染。
- 可压制双色片剂

主要特点：（CGMP可溯源机型具备的功能）

- 采用PLC控制，具有自动保护功能（超压、过载、急停装置）双压式，全封闭结构。
- 采用变频调整。
- 人机界面，操作方便友好。
- 数字显示主压力、片剂厚度、填充深度及转速。
- CE配置可选择。
- 具有压制片剂数据屏幕打印功能。
- 片剂超差保护功能，使片剂生产片剂更精准。

Characteristics

- The outside part of the machine is fully-enclosed, and it is made of stainless steel, meeting the G. M. P requirement.
- It has transparent windows so that press condition can be observed clearly and the windows can be opened. Cleaning and maintenance is easier.
- The machine can press not only round tablets but also different geometrical shape tablets, double-layered and annular tablets, the tablets may have the impressed letters on both sides.
- All the controller and devices are located in one side of the machine, so that it can be easier to operate.
- An overload protection unit is included in the system to avoid the damage of the punches and apparatus, when overload occurs.
- The machine's worm gear drive adopts fully-enclosed oil-immersed lubrication with long service-life, prevent cross pollution.
- Can be compressed double color tablets

技术参数 Technical parameters

参数 Data	型号 Model	ZPSS226-16
冲模数 Dies (sets)		16
最大压力 Max Pressure (kn)		60
最大预压 Max-pre-pressure(kn)		10
最大片径 Max Dia. of Tablet (mm)		13-16
第一层填充深度 First layer Depth of Filling(mm)		7
第二层填充深度 Second layer Depth of Filling(mm)		0.5-6
转台转速 Rotate speed (r/min)		4-12
生产能力 Production Capacity (pc/h)		11820
电压 Voltage (v)		220/380
功率 Motor Power(kw)		2.2
外形尺寸 Overall Size(mm)		1627 x 965 x 810
重量 Weight(kg)		850

ZPS226D-16



ZPS226D双色旋转式压片机

ZPS226D Series Double Color Rotary Tablet Press

主要结构特点

本机是一种双压式自动旋转连续压片机器，将颗粒状粉料压制成各种片剂，主要应用于制药工业的片剂生产，同时适用于化工、食品电子、塑料、粉末冶金等工业部。

特点：

- 外围罩壳为全封闭，采用不锈钢材料，符合GMP标准。
- 透明玻璃观察窗，能清楚的看到机器的工作情况。且能全部打开，易于内部清理和保养。
- 大压力设计 压片片径大，能压制普通、双色、异形环形等多种形状片剂，适用于多品种，小批量生产。
- 机电一体化控制，调节面板集中控制易于操作。
- 配有压力过载保护装置，避免机器损坏。
- 采用油浸式润滑的传动机构，密闭的机体下方延长使用寿命避免交叉污染。
- 可配备数字仪表、压力显示功能。

This machine is a kind of double pressure type automatic rotation, continuous automatic tablet press for pressing granular raw materials into tablets. It is mainly used in pharmaceutical industry and also the chemical, food, electronic, plastic and metallurgical Industries.

Structure features

- The outside part of the machine is fully-enclosed, and it is made of stainless steel, meeting the GMP requirement.
- It has transparent windows so that press condition can be observed clearly and the windows can be opened. Cleaning and maintenance is easier.
- The machine can press not only round tablets but also different geometrical shape tablets, double-layered and Annular tablets the tablets may have the impressed letters on both sides.
- All the controller and devices are in one side of the machine, so that it can be easier to operate.
- An overload protection unit is included in the system to avoid the damage of the punches and apparatus when Over load occurs.
- The machine's worm gear drive adopts fully-enclosed oil-immersed lubrication with long service-life. Prevent Cross pollution.

技术参数 Technical parameters

参数 Data	型号 Model	ZPS226D-16
冲模数	Dies (sets)	16
最大压力	Max Pressure (kn)	60
最大预压	Max-pre-pressure(kn)	10
最大片径	Max Dia. of Tablet (mm)	13-16
第一层填充深度	First layer Depth of Filling(mm)	7
第二层填充深度	Second layer Depth of Filling(mm)	0.5-6
转台转速	Rotate speed (r/min)	4-12
生产能力	Production Capacity (pc/h)	11520
电压	VOLTAG (v/Hz)	220/380
功率	Motor Power(kw)	2.2
外形尺寸	Overall Size(mm)	1627 x 965 x 810
重量	Weight(kg)	850

ZPT420D、Di



本机是一种双压式自动旋转，连续压片的机器，将颗粒状原料压制成药片、刻字和异形、双色片剂。它主要用于制药工业的片剂生产，同时适用于化工、食品、电子等工业企业。

This machine is a kind of double pressure type automatic rotation, continuous tablet machine, granular materials will be compressed into round, lettering and anomalous tablet, double color tablets. It is mainly used in pharmaceutical industry tablet production, at the same time, it is suitable for chemicals, food, electronic, and other industrial enterprises.



ZPT420D、Di系列双出料旋转式压片机

ZPT420D、Di Series Double Discharging Rotary Tablet Press

产品特点

- 外围罩壳为全不锈钢封闭形式，内部台面采用不锈钢材料，能保持表面光泽与防止交叉污染，符合GMP要求。
- 装有有机玻璃透视窗，可视压片状态，侧面板能全部打开，易于内部清理和保养。
- 所有控制器和操作件均布局合理。
- 采用变频调速装置进行电气调速，操作方便，转动平稳，安全准确。
- 配有过载保护装置，当压力过载时，能自动停机。
- 实行机电一体化，采用触摸键及屏幕显示。
- 全自动润滑装置及转台上端有机玻璃防尘装置。
- 传动系统密封在主机下方油箱中，是安全分离的独立部件，亦不会有相互污染，又使传动部浸润在油池中，易散热且耐磨。
- 配有吸粉装置，能将压制室内的粉尘吸取。
- 易损件如上轨道、加料器、料斗、传动蜗杆、粉量器等与ZP33型产品具有通用结构，有利于标准化、通用化、系列化。

主要特点：（GMP可溯源机型具备的功能）

- 采用PLC控制，具有自动保护功能（超压、过载、急停装置）双压式，全封闭结构。
- 采用变频调整。
- 人机界面，操作方便友好。
- 数字显示主压力、片剂厚度、填充深度及转速。
- GE配置可选择。
- 具有压制片剂数据屏幕打印功能。
- 片剂超差保护功能，使片剂生产片剂更精准。

Product Features

- Peripheral casing is closed form which is made of all stainless steel, internal mesa adopt stainless steel material, it can keep the surface glossy and prevent cross contamination and meet GMP requirement.
- It is equipped with organic glass and visual window, visual tablet state, all of the side plate can turn on and clear up and maintenance is easy.
- All controller and operating parts are rational layout.
- It is equipped with variable frequency speed control device for electrical control, convenient operation, steady running, it is safe and accurate.
- It is equipped with overload protection device, when pressure overload, it can stop automatically.
- It is the mechanical and electrical integration, has touch key and screen display.
- Be the leader in trying to use semi-automatic lubrication device and the top of rotary table is equipped organic glass dust prevention device.
- Transmission system is sealed on the main tank below, is a safe separation of independent components, also has no cross pollution, and transmission of infiltration in the oil pool, easy to has heat output and also it is wearable.
- It is equipped with powder absorbing device, can absorb indoor dust.
- Wearing parts like orbit, feeder, hopper, drive worm, powder taking equipment and it has general structure with ZP33 type product, it is helpful for standardization, generalization and seriation.

技术参数 Technical parameters

参数 Data	型号 Model	ZPT34Di	ZPT39Di
冲模数 Quantity of Punch & Die (set)		31	35
最大压片压力 Max. Pressure (kn)		90	60
最大片径 Max. Dia. of Tablet (mm)		20	13
最大片厚 Max. Thickness of Tablet (mm)		6	6
最大充填深度 Max. Depth of Filling (mm)		15	15
转台转速 Rotate Speed (r/min)		3-35	3-35
生产能力 Production Capacity (pc/h)		130200	163900
电压 Voltage (V/Hz)		380/50	380/50
功率 Motor Power (kw)		4	4
外形尺寸 Overall Size (mm)		1240 × 980 × 1650	1240 × 980 × 1650
重量 Weight (kg)		1950	1950

ZPTK420Di-31/39



本机是一种双压式自动旋转，连续压片的机器，将颗粒状原料压制成药片、刻字和异形、双色片剂。它主要用于制药工业的片剂生产，同时适用于化工、食品、电子等工业企业。

This machine is a kind of double pressure type automatic rotation, continuous tablet machine, granular materials will be compressed into round, lettering and anomalous tablet, double color tablets. It is mainly used in pharmaceutical industry tablet production, at the same time, it is suitable for chemicals, food, electronic, and other industrial enterprises.



ZPTK420Di系列双出料旋转式压片机

ZPTK420Di Series Double Discharging Rotary Tablet Press

产品特点

- 无手轮操作，压轮位置、计量调整都采用电机控制，调整速度和精度都得到很大的提升，操作更方便。
- 装有有机玻璃透视窗，可视压片状态，侧面板能全部打开，易于内部清理和保养。
- 所有控制器和操作件均布局合理。
- 采用变频调速装置进行电气调速，操作方便，转动平稳，安全准确。
- 配有超载保护装置，当压力超载时，能自动停机。
- 实行机电一体化，采用触摸键及屏幕显示。
- 全自动润滑装置及转台上端有机玻璃防尘装置。
- 传动系统密封在主机下方油箱中，是安全分离的独立部件，亦不会有相互污染，又使传动部浸润在油池中，易散热且耐磨。
- 配有吸粉装置，能将压制室内的粉尘吸取。
- 易损件如上轨道、加料器、料斗、传动蜗杆、粉量器等与ZP33型产品具有通用结构，有利于标准化、通用化、系列化。

主要特点：（CGMP可溯源机型具备的功能）

- 采用PLC控制，具有自动保护功能（超压、过载、急停装置）双压式，全封闭结构。
- 采用变频调整。
- 具有中央自动润滑系统。
- 数字显示主压力、片剂厚度、填充深度及转速。
- CE配置可选择。
- 对每个冲头的压力进行监测并在触摸屏上显示，出片装置设有成品和废品两个通道，废品可被剔除。
- 片剂超差保护功能，使片剂生产片剂更精准。

Product Features

- No handwheel operation, the position adjustment and metering adjustment of pressure wheel are all controlled by motor, the speed and precision of adjustment are greatly improved, and the operation is more convenient.
- It is equipped with organic glass and visual window, visual tablet state, all of the side plate can turn on and clear up and maintenance is easy.
- All controller and operating parts are rational layout.
- It is equipped with variable frequency speed control device for electrical control, convenient operation, steady running, it is safe and accurate.
- It is equipped with overload protection device, when pressure overload, it can stop automatically.
- It is the mechanical and electrical integration, has touch key and screen display.
- Be the leader in trying to use semi-automatic lubrication device and the top of rotary table is equipped organic glass dust prevention device.
- Transmission system is sealed on the main tank below, is a safe separation of independent components, also has no cross pollution, and transmission of infiltration in the oil pool, easy to has heat output and also it is wearable.
- It is equipped with powder absorbing device, can absorb indoor dust.
- Wearing parts like orbit, feeder, hopper, drive worm, powder taking equipment and it has general structure with ZP33 type product, it is helpful for standardization, generalization and serlation.

技术参数 Technical parameters

参数 Data	型号 Model	ZPTK31Di	ZPTK39Di
冲模数 Quantity of Punch & Die (set)		31	39
最大压片压力 Max. Pressure (kn)		90	60
最大片径 Max. Dia. of Tablet (mm)		20	13
最大片厚 Max. Thickness of Tablet (mm)		6	6
最大充填深度 深度 Max. Depth of Filling (mm)		15	15
转速转速 Rotate Speed (r/min)		3-35	3-35
生产能力 Production Capacity (pc/h)		130200	163900
电 压 Voltage(V/Hz)		380/50	380/50
功 率 Motor Power (kw)		4	4
外形尺寸 Overall Size (mm)		1240 × 980 × 1650	1240 × 980 × 1650
重 量 Weight (kg)		1950	1950

ZPTB420D、Di



本机是一种双压式自动旋转，连续压片的机器，将颗粒状原料压制成药片、刻字和异形、双色片剂。它主要用于制药工业的片剂生产，同时适用于化工、食品、电子等工业企业。

This machine is a kind of double pressure type automatic rotation, continuous tablet machine, granular materials will be compressed into round, lettering and anomalous tablet, double color tablets. It is mainly used in pharmaceutical industry tablet production, at the same time, it is suitable for chemicals, food, electronic, and other industrial enterprises.

ZPTB420D、Di系列双出料旋转式压片机

ZPTB420D、Di Series Double Discharging Rotary Tablet Press

产品特点

- 采用波纹管接油环，即使是在最高转速下，也能杜绝油污污染片剂。
- 外围罩壳为全不锈钢封闭形式，内部台面采用不锈钢材料，能保持表面光泽与防止交叉污染，符合GMP要求。
- 所有控制器和操作件均布局合理。
- 采用变频调速装置进行电气调速，操作方便，转动平稳，安全准确。
- 配有超载保护装置，当压力超载时，能自动停机。
- 实行机电一体化，采用触摸键及屏幕显示。
- 全自动润滑装置及转台上端有机玻璃防尘装置。
- 传动系统密封在主机下方油箱中，是安全分离的独立部件，亦不会有相互污染，又使传动部浸润在油池中，易散热且耐磨。
- 配有吸粉装置，能将压制室内的粉尘吸取。
- 易损件如上轨道、加料器、料斗、传动蜗杆、粉量器等与ZP33型产品具有通用结构，有利于标准化、通用化、系列化。

主要特点：（GMP可溯源机型具备的功能）

- 采用PLC控制，具有自动保护功能（超压、超载、急停装置）双压式，全封闭结构。
- 采用变频调整。
- 人机界面，操作方便友好。
- 数字显示主压力、片剂厚度、填充深度及转速。
- CE配置可选择。
- 具有压制片剂数据屏幕打印功能。
- 片剂超差保护功能，使片剂生产片剂更精准。

Product Features

- Peripheral casing is closed form which is made of all stainless steel, internal mesa adopt stainless steel material, it can keep the surface glossy and prevent cross contamination and meet GMP requirement.
- It is equipped with organic glass and visual window, visual tablet state, all of the side plate can turn on and clear up and maintenance is easy.
- All controller and operating parts are rational layout.
- It is equipped with variable frequency speed control device for electrical control, convenient operation, steady running, it is safe and accurate.
- It is equipped with overload protection device, when pressure overload, it can stop automatically.
- It is the mechanical and electrical integration, has touch key and screen display.
- Be the leader in trying to use semi-automatic lubrication device and the top of rotary table is equipped organic glass dust prevention device.
- Transmission system is sealed on the main tank below, is a safe separation of independent components, also has no cross pollution, and transmission of infiltration in the oil pool, easy to has heat output and also it is wearable.
- It is equipped with powder absorbing device, can absorb indoor dust.
- Wearing parts like orbit, feeder, hopper, drive worm, powder taking equipment and it has general structure with ZP33 type product, it is helpful for standardization, generalization and seriation.

技术参数 Technical parameters

参数 Data	型号 Model	ZPT31Di	ZPT39Di
冲模数 Quantity of Punch & Die (set)		31	39
最大压片压力 Max. Pressure (kN)		90	60
最大片径 Max. Dia. of Tablet (mm)		20	13
最大片厚 Max. Thickness of Tablet (mm)		6	6
最大充填深度 Max. Depth of Filling (mm)		15	15
转速转速 Rotate Speed (r/min)		3-35	3-35
生产能力 Production Capacity (pc/h)		130200	163900
电压 Voltage (V/Hz)		380/50	380/50
功率 Motor Power (kw)		4	4
外形尺寸 Overall Size (mm)		1240 × 980 × 1650	1240 × 980 × 1650
重量 Weight (kg)		1950	1950

ZPTX420D Di



本机是一种双压式自动旋转，连续压片的机器，将颗粒状原料压制成药片、刻字和异形、双色片剂。它主要用于制药工业的片剂生产，同时适用于化工、食品、电子等工业企业。

This machine is a kind of double pressure type automatic rotation, continuous tablet machine, granular materials will be compressed into round, lettering and anomalous tablet, double color tablets. It is mainly used in pharmaceutical industry tablet production, at the same time, it is suitable for chemicals, food, electronic, and other industrial enterprises.



ZPTX420D、Di系列悬臂全自动双出料压片机

ZPTX420D、Di Series Cantilever Fully Automatic Double Discharge Tablet Press

产品特点

- 悬臂设计，美观、大方、简洁
- 双出料口，两边出片，生产效率高
- 采用ZPT模具，上转盘上装有防尘圈，上冲杆可装接油环，有效防止油污污染片剂
- 触摸屏控制，操作方便，实现生产自动化
- 无手轮操作，压轮、计量位置调整都采用电机控制，调整速度和精度都得到提升
- 采用变频调速装置进行电气调速，操作方便，转动平稳，安全准备
- 装有有机玻璃视窗，可视压片状态，侧面板能全部打开，易于内部清洁和保养
- 强迫加料装置控制药粉流动和填充，确保加料精度，加料器易拆装，平台易调整
- 具有中央自动润滑系统

选配功能

- 对每个冲头的压力进行检测并在触摸屏上显示
- 可以实现药粉的自动补偿
- 片剂超差自动剔除，片剂生产更精准
- 出片装置设有成品和废品两个通道，废片可被剔除

Product Features

- Cantilever design, beautiful, generous, simple. Double outlet, both sides of the sheet, high production efficiency. ZPT mould is adopted. Dust ring is installed on the upper turntable and oil ring can be installed on the upper punch rod to effectively prevent oil contamination of tablets.
- Touch screen control, easy to operate and realize production automation.
- No handwheel operation, roller, metering position adjustment using motor control, adjustment speed and accuracy are improved.
- Frequency control device is used for electrical speed regulation, which is convenient to operate, stable in rotation and safe for preparation.
- Equipped with plexiglass window, the side panel can be opened completely, which is easy to clean and maintain.
- The forced feeding device controls the powder flow and filling to ensure the feeding accuracy. The feeder is easy to be disassembled and the platform is easy to adjust.
- With central automatic lubrication system.

Optional function

- The pressure of each punch is detected and displayed on the touch screen
- It can realize the automatic compensation of powder
- Automatic elimination of out of tolerance tablets, more accurate tablet production
- There are two channels for finished products and waste products in the film output device, and the waste pieces can be removed

技术参数 Technical parameters

参数 Data	型号 Model	ZPTK31Di	ZPTK39Di
冲模数	Quantity of Punch & Die (set)	31	39
最大压片压力	Max. Pressure (kn)	90	60
最大片径	Max. Dia. of Tablet (mm)	20	13
最大片厚	Max. Thickness of Tablet (mm)	6	6
最大充填深度	深度 Max. Depth of Filling (mm)	15	15
转台转速	Rotate Speed (r/min)	3-35	3-35
生产能力	Production Capacity (pc/h)	130200	163800
电压	Voltage (V/Hz)	380/50	380/50
功率	Motor Power (kw)	4	4
外形尺寸	Overall Size (mm)	1240 × 990 × 1650	1240 × 990 × 1650
重量	Weight (kg)	1850	1850

ZPTX420G-15/17/19



本机是一种双压式自动旋转，连续压片的机器，将颗粒状原料压制成药片、刻字和异形、双色片剂。它是化工、食品、电子等工业部门处理颗粒状原料压制成大片或者块剂的设备之一，超大大压力，超高精度为主要特点。

This machine is a kind of double pressure type automatic rotation, continuous tablet machine, granular materials will be compressed into round, lettering and anomalous tablet, double color tablets. It is one of the equipment for chemical, food, electronic and other industrial departments to process granular raw materials into large pieces or blocks. It is characterized by super high pressure and ultra-high precision.

ZPTX420G系列悬臂全自动双出料压片机

ZPTX420G Series Cantilever Fully Automatic Double Discharge Tablet Press

产品特点

- 超大大压力，大片径片剂生产的理想设备
- 悬臂设计，美观、大方、简洁
- 双出料口，两边出片，生产效率高
- 采用ZPT模具，上转盘上装有防尘圈，上冲杆可装接油环，有效防止油污污染片剂
- 触摸屏控制，操作方便，实现生产自动化
- 无手轮操作，压轮、计量位置调整都采用电机控制，调整速度和精度都得到提升
- 采用变频调速装置进行电气调速，操作方便，转动平稳，安全准备
- 装有有机玻璃视窗，可视压片状态，侧面板能全部打开，易于内部清洁和保养
- 强迫加料装置控制药粉流动和填充，确保加料精度，加料器易拆装，平台易调整
- 具有中央自动润滑系统

选配功能

- 对每个冲头的压力进行检测并在触摸屏上显示
- 可以实现药粉的自动补偿
- 片剂超差自动剔除，片剂生产更精准
- 出片装置设有成品和废品两个通道，废片可被剔除

Product Features

- Super high pressure, ideal equipment for large size tablet production.
- Cantilever design, beautiful, generous, simple.
- Double outlet, both sides of the sheet, high production efficiency.
- ZPT mould is adopted. Dust ring is installed on the upper turntable and oil ring can be installed on the upper punch rod to effectively prevent oil contamination of tablets.
- Touch screen control, easy to operate and realize production automation.
- No handwheel operation, roller, metering position adjustment using motor control, adjustment speed and accuracy are improved.
- Frequency control device is used for electrical speed regulation, which is convenient to operate, stable in rotation and safe for preparation.
- Equipped with plexiglass window, the side panel can be opened completely, which is easy to clean and maintain.
- The forced feeding device controls the powder flow and filling to ensure the feeding accuracy. The feeder is easy to be disassembled and the platform is easy to adjust
- With central automatic lubrication system.

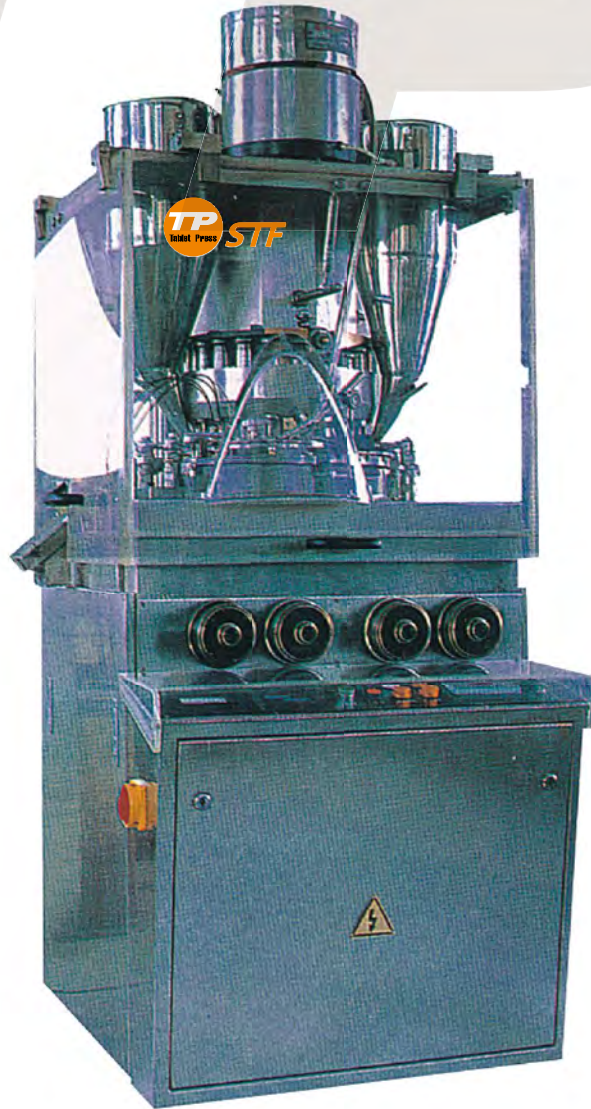
Optional function

- The pressure of each punch is detected and displayed on the touch screen
- It can realize the automatic compensation of powder
- Automatic elimination of out of tolerance tablets, more accurate tablet production
- There are two channels for finished products and waste products in the film output device, and the waste pieces can be removed

技术参数 Technical parameters

参数 Data	型号 Model	15G	17G	19G
冲模数	Quantity of Punch & Die (set)	15	17	19
最大压片压力	Max. Pressure (kn)	150	150	120
最大片径	Max. Dia. of Tablet (mm)	50	40	30
最大片厚	Max. Thickness of Tablet (mm)	15	15	13
最大充填深度	深度 Max. Depth of Filling (mm)	15-35	15-35	15-35
转台转速	Rotate Speed (r/min)	5-15	5-15	5-15
生产能力	Production Capacity (pc/h)	27000	30600	41040
电压	Voltage(V/Hz)	380/50	380/50	380/50
功率	Motor Power (kw)	7.5	7.5	5.5
外形尺寸	Overall Size (mm)	1240 x 980 x 1650	1240 x 980 x 1650	1240 x 980 x 1650
重量	Weight (kg)	2000	2000	2000

ZPW20/22



用途:

包芯片是近年来国际上出现的一种新型片型。ZPW20型包芯机是我司在消化吸收国外先进技术的基础上研制成功的一种机电一体化的产品。

ZPW20/22旋转式压片包芯机
ZPW20/22 Rotary Covered Tablet Press

特点:

- ZPW20型包芯机采用全封闭式结构，工作室与外界隔离，保证了压片区域的清洁，不会造成与外界交叉污染。压片室全部采用不锈钢材料制作，便于清洁保养、确保与药品接触部位的干净和无污染，符合药品生产的GMP要求。
- 该机采用双频调整，调整范围大，操作方便。转台采用分体结构，与药物直接接触的台面采用不锈钢材料，并经特殊工艺淬硬，使台面的平整性和耐磨性显著提高。
- 该机的润滑系统能保证各润滑点的供油，减少了蜗轮箱和轨道的磨损，延长了机器的使用寿命。
- 电气控制部分采用可双程序控制，具有压片过载停机，芯片料门缺料停机等多种自动控制功能。由光电开关和压力传感器的双重检测，保证了缺芯片的自动剔片。该机经少许的变动就可以作为一般普通压片机使用或用来压制双层片。压制包芯片时应注意对芯片的硬度及尺寸精度控制。
- ZPW20型旋转式包芯机，不仅适用于制药行业，对缓释片剂，避光控制，氧化保护以及压制二种相互不混合颗粒状物料的需要，还可用于食品、化工行业。

Applications:

- The Covered Tablet Press adopts a fully enclosed structure, with the operation compartment isolated from the outside, ensuring the cleanliness in the tablet compressing area without cross contamination. The compressing compartment is wholly made of stainless steel, which is in compliance with the GMP requirement on the production of pharmaceutical products.
- The machine adopts the adjustment of speed by means of frequency inversion, which is easy in operation and wide in the scope of adjustment of speed. Disintegrated structure is adopted for the turret, with the top of the table directly in contact with the pharmaceutical materials made of stainless steel and hardened by special technological process, resulting in the remarkable improvement the stability and resistance to wearing.
- The lubrication system of this machine can ensure the oil supply to every lubricating point, reducing the wearing of the worm-gear box and the tracks, and extending the working life of the machine.
- The electrical part adopts programmable control, with multi automatic control functions such as stopping of the machine on overload, insufficiency in the core material hopper, etc. It has a double detection mechanism by photo-electric switch and pressure sensor, to ensure the automatic rejecting of any tablet without a core in the center of tablet.
- This machine can be used as a normal tablet press or for the production of double layer tablets after a slight alteration. When used to produce the covered tablets, attention should be drawn to the control of the hardness and the precision of the dimension of the core tablet. ZPW20 Rotary Covered Tablet Press is also applicable in other industries such as foodstuff and chemical, in addition to the pharmaceutical industry to meet the need for the compression of two types of granular materials that are not to be mixed or for the protection from oxidation, control of light avoidance or time release tablets.

技术参数 Technical parameters

参数 Data	型号 Model	ZPW20	ZPW22
冲模数 Dies (sets)		20	22
最大压制片径 Max. diameter of tablet (mm)		20	20
最大片剂厚度 Max. thickness of tablet (mm)		9	9
最大充填深度 Max. filling depth (mm)		18	18
最大压力 Max. pressure (KN)		80	80
最大芯片外径 Max. outer diameter of core tablet (mm)		9	9
最大芯片厚度 Max. thickness of core tablet (mm)		5.5	5.5
普通片转台转速 Rotary speed of the turret for normal tablet (r/m)		12-36	12-36
包芯片转台转速 Rotary speed of the turret for covered tablet (r/m)		6-12	6-12
普通片最大产量 Max. capacity for normal tablet (pc/h)		14400-432000	15000-47000
包芯片最大产量 Max. capacity for covered tablet (pc/h)		7000-14400	7900-17000
功率 Power (kW)		4	4
重量 Weight (kg)		1600	1580
外形尺寸 Overall size (mm)		820 × 670 × 1900	820 × 670 × 1900

GZP420i-29/37/39/45



GZP420i-39i系列双出料旋转式压片机 GZP420i-39i Series Double Discharging Rotary Tablet Press

设备性能

- 具有预压功能
- 采用PLC可编程控制
- 采用定量润滑功能
- 加料方式，强迫加料器
- 压片室为封闭符合GMP要求

主要特点：（CGMP可溯源机型具备的功能）

- 具有自动保护功能（超压、过载、急停装置）双压式，全封闭结构。
- 采用变频调整。
- 人机界面，操作方便友好。
- 数字显示主压力、出片力、片剂厚度、填充深度及转速。
- CE配置可选择。
- 具有压制片剂数据屏幕打印功能。
- 片剂超差保护功能，使片剂生产片剂更精准。

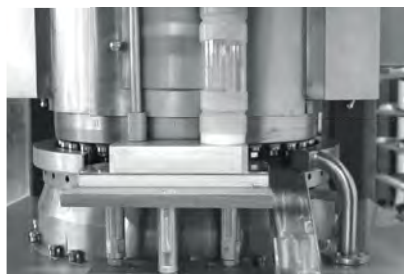
Equipment performance

- Has a preloading function
- Adopts PLC programmable control
- Man-machine interface, easy to operate
- Shows the main pressure, filling volume, slice thickness, speed, output
- With overpressure alarm function
- Using quantitative lubricating function
- Feeding methods, forced feeder
- Tablet pressing chamber meet GMP requirements

技术参数 Technical parameters

参数 Data	型号 Model	GZP29i	GZP37i	GZP39i	GZP45
冲料直径 Punch Diameter (mm)		φ 26	φ 22	φ 22	φ 18
最大压片直径 Max. Tablet Diameter (mm)		φ 22	φ 12	12	10
最大转速 Max. Rotation Speed (r/min)		40	40	40	40
最大填充深度 Max. Filling Depth (mm)		18	18	18	18
最大产量 Max. Production Capacity (pc/h)		139200	177600	187200	216000
最大主压力 Max. Main Pressure (kn)		80	80	80	80
最大预压力 Max. Pre-pressure (kn)		15	15	15	15
主电机功率 Main Motor Power (kw)		4KW	4KW	4KW	4KW
设备占地面积 Machine Area (mm)		850 × 1100	850 × 1100	850 × 1100	850 × 1100
设备高度 Machine Height (mm)		1750	1750	1750	1750
设备重量 Machine Weight (kg)		2050	2050	2050	2050

GZP520i/35/37/39/47/49/55



Main Characteristic:

(functions of CGMP traceability machine mode)
Controlled by PLC programme, it is equippec with automatic protection function (overpressure, overload and emergency stop). Human-computer Interface is easy to operate. Screen interface displays pre-pressure, main pressure, tablet thickness, filling depth and rotate speed. Pressure system of double prepressing and double main pressing.

GZP系列双出料旋转式压片机 (GZP520i)
GZP520i Series Double Discharging Rotary Table Press

设备性能

- 采用PLC编程控制
- 具有自动润滑系统
- 具有预压、主压两次粉末压力成形
- 双强迫加料系统。
- 压片室符合GMP要求

Equipment performance

- Controlled by PLC Programme
- Equip with self-lubrication system
- Tablets formed from powder by prepressing and main-pressing procedure
- Double-forced feeding system
- Tableting room is compliant with GMP standard

主要特点: (CGMP可溯源机型具备的功能)

- 采用PLC控制, 具有自动保护功能(超压、过载、急停)。
- 人机界面, 操作方便。
- 屏幕界面显示预压力、主压力、片剂厚度、填充深度及转速。
- 双预压, 双主压式压力设计系统。
- 界面可数字显示主压力、片剂厚度、填充深度及转速。
- 可显示每个冲头的压力值。
- 具有压片数据情况采集打印功能(打印机需选配)。
- CE配置可选择。
- 片剂超差保护功能, 使生产的片剂更精准。

技术参数 Technical parameters

参数 Data	型号 Model	ZP55	ZP48	ZP41	ZP35	ZP47	ZP39
冲模数 Die number		55	48	41	35	47	39
最大主压片力(kN) die number		100					
最大预压片力(kN) Main pressure		20					
最大压片直径 Max tablet diameter(mm)		13			18	18	
最大压片厚度 Max Thickness of tablet(mm)		9				6	
最大填充深度 Max Depth of filling (mm)		18				15	
转台转速(r/m) Rotate speed(r/m)		5-40					
生产能力(p/h) Output (p/h)		26400	23500	19600	16800	22500	18720
冲模直径 Tooling type		BBS型	BB型	B型	D型	ZP22	ZP26
主电机功率 Main motor power		7.5KW					
外形尺寸		1350 × 1040 × 2200					
机器重量 (kg) Weight		3900					

GZPK580i-39/47/57/61



主要特点：（CGMP可溯源机型具备的功能）

- 采用PLC控制，具有自动保护功能（超压、过载、急停装置）单压式，全封闭结构。
- 采用变频调整。
- 人机界面，操作方便友好。
- 数字显示主压力、出片力、片剂厚度、填充深度及转速。
- CE配置可选择。
- 具有压制片剂数据屏幕打印功能。



GZPK580i系列双出料高速旋转式压片机

GZPK580i Series Double Discharging High-speed Rotary Tablet Press

产品介绍

本机是一种双压式自动旋转连续压片机，主要应用于制药工业的片剂生产、同时适用于化工、食品、电子、塑料、粉末冶金等工业部门。

- 全封闭压片室，结构及材质均符合GMP要求

以下可选配

- 具有预压功能
- 人机界面，触摸屏操作，操作方便，具有故障点自诊断功能
- 数字显示主压力，片剂厚度，充填深度及转速，产量。
- 电子式冲模过载保护
- 自动润滑系统

Product Features

The machine is a double-press type continuous automatic rotary tableting machine, mainly used in the pharmaceutical industry, tablet production, and also the chemical, food, electronics, plastics, metallurgy and other industrial sectors.

- Fully enclosed compression compartment, structure and material are in compliance with GMP requirements

Below can optional

- With pre-pressure function
- Man-machine interface, touch screen operation, easy to operate, with a self-diagnostic function point of failure
- Figures show the main pressure, tablet thickness, filling depth and speed
- Electronic overload die
- Automatic lubrication system

技术参数 Technical parameters

参数 Data	型号 Model	GZPK580			
冲模数 Quantity of Punch & Die (set)		39	47	57	61
冲模型式 Tooling type		IP125.3E	IP119	IP119	IP119
最大生产能力 Max. Production Capacity (pc/h)		22464-22464C	27072-27072C	32032-32032C	35136-35136C
最大主压力 Max. Main Pressure (kn)		100	100	100	100
最大预压力 Max. Pre-pressuer(kn)		30	30	30	30
最大压片直径 Max. Tablet Diameter (mm)		25	18	14	11
最大充填深度 Max. Filling Depth (mm)		18	18	18	18
转台转速 Rotation Floor Speed (r/min)		5-48	5-48	5-48	5-48
电机功率 Motor Power (kw)		7.5	7.5	7.5	7.5
外型尺寸 Overall Size (mm)		1080×1400×2160 (包括报警灯)			
重量 Weight (kg)		3000			

TP40



TP40磁性材料专用压机

TP40 special press for magnetic materials

产品介绍

本机是一种双压式自动旋转连续压机，主要应用于磁性材料成型等工业部门，超大的压片压力，高精度工艺，压件一致性良好。

- 产量大、生产效率高，应用范围广；
自动顶模脱模、脱模曲线平稳、工艺性好；
- 变频无极变速，可任意调整压制速度；
- 结构合理，便于维修；
- 过盈加料，保证压件一致性；
- 可配预压二次加压功能，压制效果更佳。

Product Features

This machine is a double press automatic rotary continuous press. It is mainly used in magnetic material forming and other industrial sectors. It has super large pressing pressure, high precision technology and good consistency of pressing parts.

- Large output, high production efficiency and wide application range;
- Automatic top mold demoulding, demoulding curve is stable, and the process is good;
- Variable frequency stepless speed change, can adjust the pressing speed arbitrarily;
- The structure is reasonable and easy to maintain;
- Interference feeding ensures the consistency of pressing parts;
- It can be equipped with the function of pre pressing and secondary pressing, and the pressing effect is better.

技术参数 Technical parameters

参数 Data 型号 Model	TP8C	TP5C	TP4C	TP3C	TP2C
冲模数 Quantity of Punch & Die (set)	13	15	17	25	29
最大充填深度 Max. Filling Depth (mm)	80	70	60	50	50
最大主压片力 Max. Main Pressure (kn)	80	50	40	30	20
最大压片直径 Max. Tablet Diameter (mm)	70	55	45	40	35
最大压片厚度 Max. Production Capacity (pc/h)	50	40	40	30	30
最大转速 Rotation speed range	6	8	11	11	11
最大生产能力 Max. tablet thickness	936C	1440C	2244C	3300C	3828C
功率 Motor Power (kw)	22	22	15	11	11
外形 Overall Size (mm)	1250 x 1300 x 2500				
重量 Weight (kg)	6000				

DP-IPTD



DP系列IPTD单冲压片机

DP Series Iptd Single Punch Tablet Press

DP50 是吸收国内外先进技术研制成功的IPTD单冲压片机,它的优点是:物料利用率高、结构合理、操作方便、体积小、压力大、噪音低、片重差异小、物料的填充深度、压片的厚度可以调节并可以连续压片,各项功能指标达到进口机水平。在设计过程中采用多项新技术,从而保证了生产过程更加安全、规范。

This model is a IPDT single station press that is specially designed for used in laboratory of production in small batches. It can press all kinds of granular materials into round tablets. The machine can be equipped with one unit of punch and die with both the filling depth and thickness of the tablet adjustable. The outer appearance of the machine is well designed with a compact structure. It features a number of advantages such as reasonable layout, small dimension and large pressure. It is a small size equipment that Compliance with GMP requirements.



IPTD 模具

技术参数 Technical parameters

参数 Data	型号 Model	DP 50 IPTD
最大压力	Max Pressure (kn)	50
最大片径	Max Dia. of Tablet (mm)	25
填充深度	Max Depth of Filling(mm)	20
最大片厚	Max Thickness of Tablet(mm)	0.5-8
生产能力	Production Capacity (pc/h)	3600
电压	VOLTAGE (V/Hz)	220/500
功率	Motor Power(kw)	1.5
外形尺寸	Overall Size(mm)	390 x 500 x 830
重量	Weight(kg)	150

TDP系列单冲压片机

TDP SERIES SINGLE PUNCH TABLET PRESS



本机用以将各种颗粒状原料压制成药片，适用于实验室试制或小批量生产各种药片、糖片、钙片、异形等。其特点是一种小型台式电动连续压片的机器，也可以手摇。机上可安装一付冲模，物料的充填深度，压片厚度均可调节。

This machine is used for pressing different kinds of granular raw materials into round piece. It is applicable to trial manufacturing in Lab or batch produce in small amount different kinds of piece, sugar piece, calcium piece and piece of abnormal shape. It features a small desktop type press for motive and continual sheeting. It can also be hand-operated. Only one pair of punching die can be erected on this press. Both filling depth of material and thickness of piece are adjustable.

技术参数 Technical parameters

型号 Product No.	TDP-C	TDP-1	TDP-2	TDP-3	TDP-4	TDP-5	TDP-5A	TDP-5B	TDP-6	TDP-6A	TDP-2B
工作压力 Max. Pressure(KN)	10	15	20	30	40	50	50	50	60	60	60
最大片径 Max. Dia. of Tablet(mm)	10	12	13	14	15	22	22	22	25	25	25
最大片厚 Max.Thickness of Tablet (mm)	6	6	6	6	6	7	7	7	7.5	7.5	7.5
充填深度 Max.Depth of Filling (mm)	12	12	12	12	12	15	15	15	15	15	15
产量 Production Capacity (pc/h)	6000	6000	6000	6000	6000	3600	3600	3600	3600	3600	3600
电压 Voltage(V)	220/380										
功率 Motor Power (kw)	0.37	0.37	0.37	0.55	0.55	0.75	0.55	0.55	1.1	0.75	0.75
外形尺寸 Overall Size (mm)	530×340×570			530×360×530				600×500×700		650×500×700	
重量 Weight (kg)	35	60	75	80	95	150	170	185	165	180	185

DP系列单冲压片机

DP SERIES SINGLE PUNCH TABLET PRESS



DP30、DP40压片机适用于制药机、化工、食品、冶金等行业，是将各种颗粒状原料压制成药圆形片或异形片的小型制剂设备。主要特点是：片重精度高、工作平稳、噪音小、原料损耗低，最低实验原料用量仅为200克。该产品是科研院所、医院制剂室、工厂实验室试制和小规模生产的理想设备。

This machine is widely used for pharmacy, chemical, food, and metallurgy industry. It can press round or irregular tablets from various granular materials. High precision of filling, low-noise, low-consumption of material, and it works smoothly. The minimum consumption of lab material is just 200g. It is a good machine for research & development in lab at hospital and plant, used to small-scale production.

DP12、DP50是吸收国内外先进技术研制成功的。它的优点是：物料利用率高、结构合理、操作方便、体积小、压力大、噪音低、片重差异小，物料的充填深度、压片的厚度均可连续改变，各项功能指标达到进口机水平。在设计过程中采用多项新颖技术，从而保证了生产过程更加安全、规范。

This model is a single station press that is specially designed for use in laboratory of production in small batches. It can press all kinds of granular materials into round tablets. The machine can be equipped with one unit of punch and die with both the filling depth and thickness of the tablet adjustable. The outer appearance of the machine is well designed with a compact structure. It features a number of advantages such as reasonable layout, small dimension and large pressure. It is a small size equipment that complies with GMP requirements.

技术参数 Technical parameters

型号 Product No.	DP30	DP40	DP12	DP50
最大压力 Max. Pressure(KN)	30	40	15	50
最大片径 Max. Dia. of Tablet(mm)	20	30	12	25
充填深度 Max.Depth of Filling (mm)	20	22	11	20
最大片厚 Max.Thickness of Tablet (mm)	0.5-8	0.5-8	6	0.5-8
产量 Production Capacity (pc/h)	3600	3600	6000	3600
电压 Voltage(V)	220/380			
功率 Motor Power (kw)	0.55	0.75	0.75	1.5
外形尺寸 Overall Size (mm)	708×459×740	850×550×830	475×275×555	580×500×830
重量 Weight (kg)	150	200	100	150

THP系列单冲压片机

THP SERIES SINGLE PUNCH TABLET PRESS

THP系列是一种花篮式连续自动压片机。它是化工、食品、电子等工业部门处理颗粒状原料压制成药片或冲剂的必要设备之一。它适用于批量生产、实验室、医院等部门压制药片、触媒、硅片、钙片、咖啡片、粉末冶金、电子原件和各种农药化肥片剂等。它可压制各种异形、环形片剂，并可压制双面刻有商标、文字及简单图形的片剂。（可实现机械无级调速）（选配）



THP series flower tablet presses is small continuous automatic tablet press which is one of the essential equipments for pressing granular raw materials into tablets or medicines taken with water in pharmaceutical, chemical, food, electronics industries. It can be used to press medicinal tablets, catalysts, candies, powder metallurgical parts electronics components, various tablets of pesticide and fertilizer etc. in small-batch production, laboratory and hospital. The machine can press special-shaped, ringlike tablets of different kinds, and can also process the tablets of pesticide both sides are impressed trademarks, letters and simple patterns. (This machine could achieve mechanical noniolar timing) (optional)

技术参数 Technical parameters

型号 Product No.	THP-4	THP-10	THP-10B	THP-15	THP-15B	THP-45	THP-102
工作压力 Max. Pressure(kN)	40	100	100	150	150	45	100
最大片径 Max. Dis. of Tablet(mm)	20	40	50	60	65	70	160
充填深度 Max. Depth of Filling (mm)	25	45	45	45	50	80	100
最大片厚 Max. Thickness of Tablet (mm)	13	23	23	30	30	30	50
产量 Production Capacity (pc/h)	300	3000	3000	2700	2700	600	1800
电压 Voltage(v)	380	380	380	380	380	380	380
功率 Motor Power (kw)	1.1	3.7	3.7	4	4	7.5	11
外形尺寸 Overall Size (mm)	620×620×820	666×860×1824	690×895×1875	800×1000×2200	800×1000×2200	900×1100×2300	1200×1400×2800
重量 Weight (kg)	520	750	770	800	900	2050	2800

ZP老牌系列旋转式压片机

ZP OLD BRAND SERIES ROTARY TABLET PRESS



ZP17 ZP19



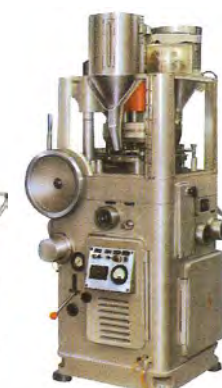
ZP33



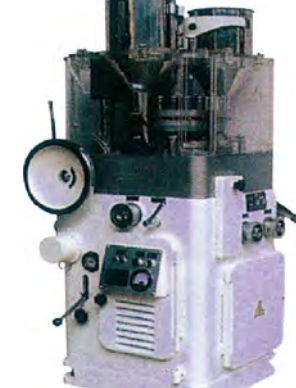
ZP33B



ZP25



ZPW21



ZPW21A

技术参数 Technical parameters

型号 Product No.	ZP15/17	ZP19	ZP25	ZP33	ZP33B	ZPW21	ZPW21A
冲模数 Dies (sets)	15/17	19	25	33	33	21	21
最大压力 Max. Pressure(kN)	60/40	40	60	50	60	80	80
最大片径 Max. Dis. of Tablet(mm)	25/18	12	20	12	13	20	20
充填深度 Max. Depth of Filling (mm)	20/15	15	20	15	1	18	18
最大片厚 Max. Thickness of Tablet (mm)	10/6	6	9	6	6	9	9
转速 Turnet Speed(r/min)	20/20-40	20-40	6-25	11-28	10-30	12-36	12-36
产量 Production Capacity (pc/h)	40000	45000	3000	110000	118000	45000	45000
功率 Motor Power (kW)	2.2	2.2	3	2.2	2.2	3	3
电压 Voltage(v/Hz)	380/50	380/50	380/50	380/50	380/50	380/50	380/50
外形尺寸 Overall Size (mm)	880×1750×1900	880×1750×1900	900×1800×1900	920×1900×1900	920×1900×1900	900×1800×1900	900×1800×1900
重量 Weight (kg)	600/560	560	1800	850	1100	1200	1200

ZP、ZPT130系列旋转式压片机

ZP、ZPT130 SERIES ROTARY TABLET PRESS

该系列是一种单压式自动旋转连续压片机器，它将颗粒状原料压制成各种普通片及异形片，主要应用于制药工业的片剂生产，同时适用于化工、食品、电子、塑料、粉末冶金等工业部门。

特点:

- 符合GMP设计
- 高品质的不锈钢结构
- 整体采用严密的密封和防尘设计
- 采用高清晰、隔离视窗设计，便于拆卸的结构，可维护性好。
- 可配备数字仪表、压力显示功能。

This machine is a new generation product of our factory, and it is a continuous and automatic rotary tablet press for pressing various kinds of different shape tablets and also plain tablets. It is mainly used in pharmaceutical industry and the chemical, food, plastics, powder, metallurgy and electronic industries.

CHARACTERISTICS:

- Design of GMP;
- High quality all stainless steel constructions
- Reliable safety sealing system and dust-proof system;
- High visibility isolated door to prevent cross contamination;
- Easily remove parts for quick machine's maintenance.



技术参数 Technical parameters

型号 Product No.	ZP5A	ZP7A	ZP9A	ZP10A	ZP12A	ZP5B	ZP7B	ZP9B	ZP10B	ZP5D	ZP7D	ZP9D
冲模数 Dies (sets)	5	7	9	10	12	5	7	9	10	5	7	9
最大压力 Max. Pressure(KN)	40	40	40	40	40	50	50	50	50	40	40	40
最大片径 Max. Dia. of Tablet(mm)	13	13	13	13	13	20	20	20	20	13	13	13
最大片厚 Max.Thickness of Tablet (mm)	6	6	6	6	6	6	6	6	6	6	6	6
充填深度 Max.Depth of Filling (mm)	15	15	15	15	15	15	15	15	15	15	15	15
转速 Turret Speed(r/min)	32	32	32	32	32	25	25	25	25	32	32	32
产量 Production Capacity (pc/h)	9600	13440	17280	19200	23040	7500	10500	13500	15000	9600	13400	17280
电压 Voltage(V)	220/380			220/380			220/380			220/380		
功率 Motor Power (kw)	1.5			2.2			1.5			1.5		
外形尺寸 Overall Size (mm)	640 × 480 × 1100			700 × 530 × 1210			540 × 380 × 900					
重量 Weight (kg)	260			300			140					

ZP、ZPT168系列旋转式压片机

ZP、ZPT168 SERIES ROTARY TABLET PRESS

该系列压片机符合GMP标准。它是制药、化工、电子、食品等行业将粉、粒状原料压制成片的连续、自动压片机。其优点：物料利用率高、结构合理、操作方便、体积小、压力大、噪音低、片重差异小、物料的填充深度，压片的厚度均可连续调节，各项功能指标达到国外进口机的标准。

可配备数字仪表、压力显示功能

This series of tablet presses meeting the GMP standard. They are applicable to industries such as pharmaceutical, chemical, electronic and foodstuff for pressing the powder or granular materials into tablets automatically in a continuous way. It features advantages such as low waste or materials, reasonable structure, easy operation, compact size, large compression, low noise, small deviation of weight, with the filling depth and thickness of the tablet continuously adjustable and all the functionality indicators reaching the level of the similar imported machines.



技术参数 Technical parameters

型号 Product No.	ZP15/17	ZP19	ZP25	ZP33	ZP33B	ZPW2'	ZPW21A
冲模数 Dies (sets)	15/17	19	25	33	33	21	21
最大压力 Max. Pressure(KN)	60/40	40	60	50	60	80	80
最大片径 Max. Dia. of Tablet(mm)	25/18	12	20	12	13	20	20
充填深度 Max.Depth of Filling (mm)	20/15	15	20	15	1	18	18
最大片厚 Max.Thickness of Tablet (mm)	10/6	6	9	6	6	9	9
转速 Turret Speed(r/min)	20/20-40	20-40	6-25	11-28	10-30	12-36	12-36
产量 Production Capacity (pc/h)	40000	45000	3000	110000	118000	45000	45000
功率 Motor Power (kw)	2.2	2.2	3	2.2	2.2	3	3
电压 Voltage(V/Hz)	380/50	380/50	380/50	380/50	380/50	380/50	380/50
外形尺寸 Overall Size (mm)	890 × 750 × 1400	890 × 750 × 1400	1000 × 800 × 1400	990 × 800 × 1400	990 × 800 × 1400	990 × 800 × 1400	990 × 800 × 1400
重量 Weight (kg)	600/560	560	1800	850	1100	1200	1200

ZP、ZPT198系列旋转式压片机

ZP、ZPT198 SERIES ROTARY TABLET PRESS

该机型替代单冲，适合制药、食品、化工等科研单位实验室。试剂或小批量生产将各种颗粒状原料压制成药片、异形片的最佳理想设备。外形不锈钢包装，工作室有机玻璃全开全闭的新型结构明亮透视，清除杂物无死角。该机体积小、重量轻、外观整洁，具有安全减压设备、功能齐全、噪音小等优点。

特点：

- 单压式，全封闭结构，符合GMP要求
- 主轴转动，变频调速
- 选用先进的蜗轮减速器配套
- 转台装有推力轴承，自润滑轴承
- 触摸式操作按钮
- 紧急停机功能
- 可配备数字仪表、压力显示功能

The series machines instead of single punching, offer such laboratories of R&D institution as the pharmacy, food chemical industry, etc. It is the best ideal equipment to trial-produce on produce in small batch to suppress various kinds of particles form grain to wafer and abnormality. Stainless steel packaging of the appearance, operating room Lucite all opened new-type structure closed completely to prospect bright, do not have the dead angle to remove incidentals. The machine has the advantages of little volume light weight, neat appearance, safe decompress, complete function, low noises. Adopts stepless speed regulation.

CHARACTERISTICS:

- Single roller, fully enclosed in compliance with GMP requirements;
- Speed adjustment by means of inverter;
- Man-machine interface friendly and easy to operate;
- Digital display of the main compression, tablet ejection force, thickness of the tablet, fill depth and rotary speed;
- Over load protection for motor with emergency stop device.
- CE certified optional

技术参数 Technical parameters

型号 Product No.	ZP5A	ZP7A	ZP9A
冲模数 Dies (sets)	8	10	16
最大产量 Production Capacity (pc/h)	15360	19000	30720
最大压力 Max. Pressure(kN)	60	60	60
最大片径 Max. Dia. of Tablet(mm)	20	20	12
充填深度 Max.Depth of Filling (mm)	16	16	16
转盘转速 Turnet Speed(r/min)	15-30	15-30	15-30
功率 Motor Power (kw)	3	3	2.2
外形尺寸 Overall Size (mm)	794 x 699 x 1132	794 x 699 x 1132	794 x 699 x 1132
重量 Weight (kg)	550		



ZP、ZPT226II-19II系列旋转式压片机 (上驱动)

ZP、ZPT226II-19II SERIES ROTARY TABLET PRESS

本机用以将各种颗粒状原料压制成药片状，是适合批量生产的基本设备。压片时转盘的速度、物料的充填深度、压片厚度均可调节。机上的机械缓冲装置可避免因过载而引起的机件损坏。机内可配吸粉箱，通过吸咀可吸取机器运转时所产生的粉尘，避免粘堵堵塞，并可回收原料重新使用。

可配备数字仪表、压力显示功能。

This is one of the essential equipments for pressing granular raw materials into tablets in pharmaceutical, chemical, food, and electronics industries. It can be used to press medicinal tablets, catalysts, candies, calcium coffee pills, powder metallurgical parts electronics components, various tablets of pesticide and fertilizer etc. In small-batch production, laboratory and hospital. The machine can press special-shaped, ring like tablets of different kinds, and can also process the tablets of pesticide both sides are impressed trademarks, letters and simple patterns.



技术参数 Technical parameters

型号 Product No.	ZP11 I	ZP17 II	ZP19 II
冲模数 Dies (sets)	11	17	19
最大压力 Max. Pressure(kN)	80	60	60
最大片径 Max. Dia. of Tablet(mm)	40	18	15
充填深度 Max.Depth of Filling (mm)	15-28	15-28	15
最大片厚 Max.Thickness of Tablet (mm)	6-13	6-13	6-13
转盘转速 Turnet Speed(r/min)	15	32	32
产量 Production Capacity (pc/h)	9900	32640	36480
电压 Voltage(v/Hz)	380/50	380/50	380/50
功率 Motor Power (kw)	4	3	3
外形尺寸 Overall Size (mm)	760 x 650 x 1400	760 x 650 x 1400	760 x 650 x 1400
重量 Weight (kg)	560	650	650

ZP、ZPT320D、Di系列旋转式压片机

ZP、ZPT320D、DI SERIES ROTARY TABLET PRESS

特点:

- 外围罩壳为全封闭, 采用不锈钢材料,
- 符合GMP标准
- 设有透明玻璃观察窗, 能清楚地看到机器的工作情况, 且能全部打开, 易于内部清理和保养
- 本机压力大, 压片片径大, 能压制普通、异型、环形等多种形状片剂, 特别适合多品种, 小批量生产
- 机电一体化, 所有控制器及调节装置集中于机体一侧, 易于操作
- 配有压力过载保护装置, 避免机器损坏
- 采用油浸式润滑的传动机构, 密封在机体下方延长了使用寿命避免了交叉污染
- 可配备数字仪表、压力显示功能



CHARACTERISTICS:

- The outside part of the machine is fully-enclosed, and it is made of stainless steel, meeting the G. M. P requirement.
- It has transparent windows so that press condition can be observed clearly and the windows can be opened. Cleaning and maintenance is easier.
- The machine can press not only round tablets but also different geometrical shape tablets, double-layered and annular tablets, the tablets may have the impressed letters on both sides.
- All the controller and devices are located in one side of the machine, so that it can be easier to operate.
- A overload protection unit is included in the system to avoid the damage of the punches and apparatus, when overload occurs.
- The machine's worm gear drive adopts fully-enclosed oil-immersed lubrication with long service-life, prevent cross pollution.

技术参数 Technical parameters

型号 Product No.	ZP21D	ZP151	ZP17D	ZP15D
冲模数 Dies (sets)	21	19	17	15
最大压力 Max. Pressure(kN)	100	100	100	120
最大片径 Max. Dia. of Tablet(mm)	22	25	30	40
充填深度 Max.Depth of Filling (mm)	18	18	18-30	18-33
最大片厚 Max.Thickness of Tablet (mm)	9	9	9-15	9-15
转速 Turret Speed(r/min)	37	30	20	15
产量 Production Capacity (pc/h)	46620	34200	20400	13500
电压 Voltage(v/Hz)	380/50	380/50	380/50	380/50
功率 Motor Power (kw)	4	4	4	5.5
外形尺寸 Overall Size (mm)	950 × 910 × 1750	950 × 910 × 1750	950 × 910 × 1750	950 × 910 × 1750
重量 Weight (kg)	1800	1800	1800	1800

ZP、ZPT340D、Di系列旋转式压片机

ZP、ZPT340D、DI SERIES ROTARY TABLET PRESS

ZP1000系列旋转式压片机是系列化产品, 能广泛应用于制药、食品等行业压制各种规格的圆形和异形片剂。特别适用于中药片剂。该系列压片机符合药品生产和质量管理的GMP标准。压片室与传动机构完全分开, 压片室无任何油漆, 与药品接触的零部件均采用不锈钢材料或经表面特殊处理, 无毒、耐腐蚀; 压片区域可从四面接触到, 各处表面光滑, 易于清洁。

ZP1000系列压片机有连续集中润滑系统, 使传动系统, 导轨和主要摩擦部位得到充分的润滑, 噪声和磨损减少, 使维修保养费用大大降低。压力、片厚、充填、速度调节手轮, 各类指示灯、表牌、按钮均设在同一方向, 观察、操作方便。ZP1000系列旋转式压片机采用组合设计, 结构紧凑, 每种型号90%以上的机件可以与系列中的其他型号通用, 便于易损备件的管理和更换; 模用IPT标准, CE配置可选择, (ZP1034使用ZP标准冲模)

可配备数字仪表、压力显示功能。



ZP1000 series rotary tablet press is a series products, can be widely used in pharmaceutical, food and other industries to press various specifications of the round and special-shaped tablets. Especially suitable for traditional Chinese medicine tablet. This series of tablet press machine conforms to the pharmaceutical production and quality management of the GMP standard. Tablet chamber and drivemechanism are completely separate, tablet room without any paint and drug contact parts are made of stainless steel material or gets the special surface treatment, non-toxic corrosion resistance; Pressure area from all access to everywhere, surface smooth, easy to clean.

ZP1000 series tablet press have continuous centralized lubrication system, transmission system, guide and main friction parts get sufficient lubrication, noise and reduce wear and tear, make the maintenance cost greatly reduced. Pressure, sheet thickness, filling, speed regulation handwheel, each kind of lamp, table plate and buttons are all in the same direction, easy to operate and observe. ZP1000 series rotary tablet press adopt combined design, compact structure, each type of parts can be more than 90% of the series of other types of general, facilitate vulnerable spare parts management and replacement; The mould adopts the IPT standard, CE configuration can be choosed. (ZP1034 use ZP standard punch& die)

技术参数 Technical parameters

型号 Product No.	ZPY13E	ZPY12E	ZPY124	ZPY134
冲模数 Dies (sets)	36	29	24	34
最大压力 Max. Pressure(kN)	80	80	80	60
充填深度 Max.Depth of Filling (mm)	18	18	18	15
最大片径 Max. Dia. of Tablet(mm)	11	16	22	13
产量 Production Capacity (pc/h)	54000	43500	36000	51000
功率 Motor Power (kw)	4	4	4	4
外形尺寸 Overall Size (mm)	930 × 950 × 1800	930 × 950 × 1800	930 × 950 × 1800	930 × 950 × 1780
重量 Weight(kg)	1800	1800	1800	1800

ZP420D-125D系列旋转式压片机

ZP420D-125D SERIES ROTARY TABLET PRESS

ZP420-125D系列旋转式压片机能广泛应用于制药、食品等行业压制各种规格的圆形和异形片剂。

特点:

- 符合药品生产和质量管理的GMP标准。压片室与传动机构完全分开。压片室无任何油漆,与药品接触的零部件均采用不锈钢或经表面特殊处理,无毒耐腐蚀;压片区域表面光滑,易于清洁。
- 连续集中润滑系统,使传动系统,道轨和主要摩擦部位得到充分的润滑,噪声和磨损减少,使维修保养费用大大降低。
- 压力、片厚、充填、速度调节手轮,各类指示灯、表牌、按钮均设在同一方向,观察、操作方便。
- 该系列旋转压片机采用组合设计,结构紧凑,每种型号90%以上的机件可以与系列中的其他型号通用,便于易损备件的管理和更换;模具采用IPT标准。采用变频调速装置进行电器调节,操作方便,转动平稳,安全准确。
- 可配备数字仪表、压力显示功能。



ZP420-125D Rotary Tablet Press is a serial product widely used for pharmaceutical, food industry to produce all kinds of round tablets and irregular tablets. It is especially suitable for Chinese herb tablets.

Product Features:

- This series meets the GMP standard, Pressing chamber is utterly separated with the gear system. There is no any paint in the chamber. The parts contacting with tablets are made of stainless steel or surface of those parts are specially handled. The parts are poisonous less and rotten-resistant. The chamber is also sealed with or organic glass to prevent pollution.

技术参数 Technical parameters

型号 Product No.	ZPY137	ZPY125	ZPY126	ZPY135
冲模数 Dies (sets)	37	29	25	35
最大压力 Max. Pressure (kN)	80	80	80	60
充填深度 Max. Depth of Filling (mm)	18	18	18	15
最大片径 Max. Dia. of Tablet (mm)	13	18	22	13
产量 Production Capacity (pc/h)	194000	156000	128000	184000
电压 Voltage (V)	380	380	380	380
功率 Motor Power (kw)	4	4	4	4
外形尺寸 Overall Size (mm)	980 × 1100 × 1800	980 × 1100 × 1800	980 × 1100 × 1780	980 × 1100 × 1780
重量 Weight (kg)	2150	2150	2150	2150

- The gear system, the lead rail and the major friction parts are fully lubricated by the continual and concentrated lubrication device of the ZP420-125D.
- It is very convenient to observe, operate the pressure, thickness, feeding, speed adjustable hand wheels and all kinds of buttons, indicating lights and indicators are at the same side.
- The design of ZP420-125D series is reasonable. Most of parts are universal in this series. So it is easy to manage and change the spare parts. The punch and dies meet the IPT standard.
- The speed adjustment of the driver is controlled by the frequency conversion device.

ZP420A/B-35A/B系列旋转式压片机

ZP420A/B-35A/B SERIES ROTARY TABLET PRESS

特点:

- 本机用以将各种颗粒状原料压制成片剂,除能压制圆形外还能压制各种几何形状的异形片、双面刻字片,中药片剂、西药片剂、钙片、口含片、螺旋藻片、奶片、糖果片、泡腾片、咀嚼片、调味块、鸡精块、樟脑丸(卫生球)、芳香片、消毒片、化肥片、农药片、纽扣电池、电子元件、冶金粉末陶瓷粒等。
- 其结构为双压式,两套压轮,变频调速,充填深度,压片厚度均能调节。
- 机上装有机械缓冲装置,压力过载时能自动停车,机上还装有断冲保护装置,可避免零件遭受损坏。
- 整机符合GMP要求。
- 按用户要求可配置吸尘器、筛片机、加料机等。



Product Features:

- The machine is used to press all sorts of granular materials, like geometry shape of profiled sheet, double lettering piece, traditional Chinese medicine tablet, western medicine tablet, calcium tablet, buccal tablet, spirulina tablet, milk tablet, candy tablet, effervescent tablets, chewable tablets, seasoning block, chicken pieces, camphor ball (naphthalene), aromatic piece, disinfection tablet, fertilizer tablet, pesticide tablet, button cell, electronics, metallurgy powder ceramic grain, etc.
- The structure has double pressure, two sets of roller, frequency control of motor speed, depth of fill, tablet thickness are can adjust-ed.

- The machine is equipped with mechanical buffer device, the pressure overload can automatically shutdown, killing all had a broken impact protection, can avoid parts damaged.
- In accordance with GMP
- According to user's requirements, the machine can be equipped with a vacuum cleaner, screen machine, feeding machine, etc.

技术参数 Technical parameters

型号 Product No.	ZP35A	ZP35B
冲模数 Dies (sets)	35	35
最大压力 Max. Pressure (kN)	60	60
预压压力 Pre-pressure (kN)	-	5
最大片径 Max. Dia. of Tablet (mm)	13	13
充填深度 Max. Depth of Filling (mm)	15	15
最大片厚 Max. Thickness of Tablet (mm)	6	6
转速 Turret Speed (r/min)	14-36	14-36
产量 Production Capacity (pc/h)	150000	150000
电压 Voltage (V/Hz)	380/50	380/50
功率 Motor Power (kw)	3	3
外形尺寸 Overall Size (mm)	910 × 1120 × 1650	1180 × 1050 × 1700
重量 Weight (kg)	2150	2200

ZP420-39I系列旋转式压片机

ZP420-39I SERIES ROTARY TABLET PRESS

特点:

- 符合药品生产和质量管理的GMP标准。压片室与传动机构完全分开，压片室无任何油漆，与药品接触的零部件均采用不锈钢或经表面特殊处理，无毒耐腐蚀；压片区域表面光滑，易于清洁。
- 连续集中润滑系统，使传动系统、道轨和主要摩擦部位得到充分的润滑，噪声和磨损减少，使维修保养费用大大降低。
- 压力、片厚、充填、速度调节手轮，各类指示灯、表牌、按钮均设在同一方向，观察、操作方便。
- 该系列旋转压片机采用组合设计，结构紧凑，每种型号90%以上的机件可以与系列中的其他型号通用，便于易损备件的管理和更换；模具采用IPT标准。采用变频调速装置进行电器调节，操作方便，转动平稳，安全准确。
- 可配备数字仪表、压力显示功能。



主要特点: (CGMP可溯源机型具备的功能)

- 采用PLC控制，具有自动保护功能(超压、过载、急停装置)
- 双压式，全封闭结构。
- 采用变频调整。
- 人机界面，操作方便友好。
- CE配置可选择。
- 具有压制片剂数据屏幕打印功能。
- 片剂起差保护功能，使片剂生产片剂更精准。

Product Features:

- The machine is used to press all sorts of granular materials, like geometry shape of profiled sheet, double lettering piece, traditional Chinese medicine tablet, western medicine tablet, calcium tablet, buccal tablet,

- spirulina tablet, milk tablet, candy tablet, effervescent tablets, chewable tablets, seasoning block, chicken pieces, camphor ball (naphthalene), aromatic piece, disinfection tablet, fertilizer tablet, pesticide tablet, button cell, electronics, metallurgy powder ceramic grain, etc.
- The structure has double pressure, two sets of roller, frequency control of motor speed, depth of fill, tablet thickness are can adjusted.
- The machine is equipped with mechanical buffer device, the pressure overload can automaticly shutdown, killing all had a roken impact protection, can avoid parts damaged.
- In accordance with GMP
- According to user's requirements, the machine can be equipped with a vacuum cleaner, screen machine, feeding machine, etc.

技术参数 Technical parameters

型号 Product No.	ZP39I
冲模数 Dies (sets)	39
最大压力 Max. Pressure(KN)	80
预压压力 Pre-pressure(KN)	15
最大片径 Max. Dia. of Tablet(mm)	13
充填深度 Max.Depth of Filling (mm)	15
最大片厚 Max.Thickness of Tablet (mm)	6
转盘转速 Turret Speed(r/min)	14-36
产量 Production Capacity (pc/h)	168400
电压 Voltage(v/Hz)	380/50
功率 Motor Power (kw)	4
外形尺寸 Overall Size (mm)	1160 x 1100 x 1720
重量 Weight (kg)	2200

ZP、ZPT420B-33B系列旋转式压片机 (上驱动)

ZP、ZPT420B-33B SERIES ROTARY TABLET PRESS

本机用以将各种颗粒状原料压制片剂，除能压制圆片外还能压制各种几何形状的异形片、双面刻字片。其结构为双压式，有两套加料装置、两套压轮、双频调速，充填深度、片片厚度均能调节。机上装有机槓缓冲装置，压力过载时能自动停车，机上还装有断冲保护装置，可避免零件遭受损坏，整机符合GPM要求。按用户要求可配置吸尘器、筛片机，加料机。

特点:

- 可压大粒玻璃马赛克专用压机版。
- 配以自动输送理块机，可实现自动联线。
- 具有预压功能。
- 加料方式，强迫加料器。
- 可配备数字仪表、压力显示功能。



This machine is designed for pressing round tablets from various kinds of granular materials. It is primary machine to fit batchproduction of tablets. During operation, the speed of the turret rotation, the depth of the filling material and the thickness of the tablets can be adjusted. The mechanical buffer unit will prevent punches and apparatus from overload damage. A powder suction unit is attached to take in the residual powder can be eliminated and the collected powder material can be reused.

技术参数 Technical parameters

型号 Product No.	ZP19B	ZP23B	ZP25B	ZP33B
冲模数 Dies (sets)	19	23	25	33
最大压力 Max. Pressure(KN)	100	80	80	50
最大片径 Max. Dia. of Tablet(mm)	45	30	25	13
充填深度 Max.Depth of Filling (mm)	30	20	17	17
最大片厚 Max.Thickness of Tablet (mm)	15	12	6	6
转盘转速 Turret Speed(r/min)	15	15	15	10-30
产量 Production Capacity (pc/h)	34200	41400	45000	118800
电压 Voltage(v/Hz)	380/50	380/50	380/50	380/50
功率 Motor Power (kw)	4	4	4	3
外形尺寸 Overall Size (mm)	920 x 890 x 1540	920 x 890 x 1540	920 x 890 x 1540	920 x 890 x 1540
重量 Weight (kg)	1100	1100	1100	1100

ZP、ZPT420-ZPW15G系列旋转式压片机

ZP、ZPT420-ZPW15G SERIES ROTARY TABLET PRESS

ZPW15G是化工、食品、电子等工业部门处理颗粒状原料压制成大片或块剂的设备之一。它适用于压制药片、融膜、糖片、钙片、咖啡片、粉末冶金、电子元件和各种农药化肥片剂等。它可压制各种异形、环形片剂。并可压制双面刻有商标、文字及简单图形的片剂。可配备数字仪表、压力显示功能。

本机主要应用以金属粉末电子原件压制为主，超大压力，超高精度为主要特点。



This machine is designed for pressing all kinds of granular materials into a round plate, and is suitable for batch production of the basic equipment. Rotary speed, the depth of the filling and tablet thickness can be adjusted. The mechanical buffer device can avoid the overload and cause damage to the machine. The machine can be another match suction powder box, through the suckers to absorb dust, avoid bonding jams, and recycle raw materials to use.

技术参数 Technical parameters

型号 Product No.	ZPW15G	ZPW15G	ZPW21G
冲模数 Dies (sets)	15	19	21
最大压力 Max. Pressure (kN)	120	100	100
最大片径 Max. Dia. of Tablet (mm)	50	40	30
充填深度 Max. Depth of Filling (mm)	15-30	15-30	15-30
最大片厚 Max. Thickness of Tablet (mm)	15	15	15
转速 Turret Speed (r/min)	3-15	3-15	3-20
产量 Production Capacity (pc/h)	9000	11400	12600
电压 Voltage (v/Hz)	380/50	380/50	380/50
功率 Motor Power (kw)	7.5	5.5	5.5
外形尺寸 Overall Size (mm)	1100 x 1250 x 1875	1100 x 1250 x 1875	1100 x 1250 x 1875
重量 Weight (kg)	1900	1900	1900

ZP420-ZPS29D系列旋转式压片机

ZP420-ZPS29D SERIES ROTARY TABLET PRESS

ZPS29D多功能压片机，能广泛用于制药、食品工业，还能满足化工、陶瓷、电子、电池等行业，把各种颗粒状物料压制成片剂。该机功能齐全，除了能压制圆形片外，还能压制异形片、环形片和双面刻字片；既能压制单层片，还能压制双层片 and 三层片，以满足用户的不同需要。

机器符合GMP要求，压制室与传动机构隔离，防止药物污染；凡与药物接触的零部件均采用不锈钢或者表面镀层，无毒、耐磨、耐腐蚀。

ZPS29D系列多功能压片机具有机电一体化的功能，操作维护保养方便。选用PLC可编程控制器，对压片的主要功能和故障进行监控。选用触摸屏，能设置和显示该机的主要参数、压片平均压力及上、下限，成品合格率，各类故障等，供操作人员选择，方便直观。采用变频调速装置无级调速平稳、可靠、范围广；选用变频电机，以保证在一定频率范围内的恒功率和恒转矩调速，满足压片机在规定转速范围内的转矩要求。

ZPS29D multi-function tablet press, can be widely used in pharmaceutical, food industry, also can press the chemical, ceramics, electronics, battery, etc., all kinds of granular material.

This machine's function is all ready, in addition to suppress round piece, still can press special sheet, annular slice and double lettering slices. It can not only suppress single piece, can also suppress double-layer slice and three-layer piece, meeting different needs of users. The machine is in accordance with GMP requirements, pressing chamber and drive mechanism in isolation and prevent drug pollution; Drug contact parts are made of stainless steel or surface coating, non-toxic, with wear resistance corrosion resistance.



ZPS29D series meet GMP requirement, multi-function tablet machine has the function of mechanical and electrical integration, operation convenience in maintenance, PLC programmable controller the tablet's main function and fault monitoring. The touch screen can set and display the main parameters, tablet average pressure, upper and lower limit, product quality, all kinds of fault, etc., for operating personnel selection, convenient and intuitive. The variable frequency speed control device's stepless speed regulating smooth, reliable and scope; Frequency conversion motor to ensure that in a certain frequency range of constant power and constant torque control, meet the tablet press in the specified speed range of torque requirements.

技术参数 Technical parameters

型号 Product No.	ZPS29D	ZPS31D
冲模数 Dies (sets)	29	31
最大压力 Max. Pressure (kN)	80	80
最大片径 Max. Dia. of Tablet (mm)	20	18
充填深度 Max. Depth of Filling (mm)	18+7+7	18+7+7
转速 Turret Speed (r/min)	18-36	18-36
产量 Production Capacity	单层 Single Layer (pc/h)	200000
	三层 Three Layer (pc/h)	33480
功率 Motor Power (kw)	4	4
外形尺寸 Overall Size (mm)	1050 x 1000 x 2140	1050 x 1000 x 2140
重量 Weight (kg)	2000	2000

ZP、ZPT450-ZPW17E系列旋转式压片机

ZP、ZPT450-ZPW17E SERIES ROTARY TABLET PRESS

ZPW 17E 19E 21E是化工、食品、电子等工业部门处理颗粒状原料压制成大片或块剂的设备之一。它适用于压制药片、触媒、糖片、钙片、咖啡片、粉末冶金、电子元件和各种农药化肥片剂等。它可压制各种异形、环形片剂。并可压制双面刻有商标、文字及简单图形的片剂。产品适用于压制中药片剂、西药片剂、钙片、口含片、螺旋藻片、奶片、糖果片、泡腾片、咀嚼片、调味块、鸡精块、樟脑丸(卫生球)、芳香片、消毒片、化肥片、农药片、纽扣电池、电子元件、冶金粉末陶瓷粒等。

同时适用于压制：制药：中药西药片剂、营养素片、药丸食品：糖果片、咖啡片、巧克力豆、调味块、鸡精块、葡萄糖片，救生伐口粮

保健品：钙片、口含片、蜂胶片、螺旋藻片、泡腾片 农业：饲料块、化肥片、动物食粮 电子电池：热敏电阻、集成电路...
可配备数字仪表、压力显示功能

ZPW 17E 19E 21E are one of the essential equipments for pressing granular raw materials into tablets in pharmaceutical, chemical, food, electronics industries. It can be used to press medicinal tablets, catalysts, candies, calcium coffee pills, powder metallurgical parts electronics components, various tablets of pesticide and fertilizer etc. in small-batch production, laboratory and hospital. The machine can press special-shaped, ring like tablets of different kinds, and can also process the tablets of pesticide both sides are impressed trademarks, letters and simple patterns.



技术参数 Technical parameters

型号 Product No.	ZPW17E/19E
冲模数 Dies (sets)	17/19
最大压力 Max. Pressure(kN)	80-150
充填深度 Max.Depth of Filling (mm)	45-55
最大片径 Max. Dia. of Tablet(mm)	40-45
工作直径 Max. Working Diameter(mm)	430-530
中模直径 Dia. of Middle Die(mm)	55-66
冲杆直径 Dia. of Punch(mm)	45-55
上冲长度 Length of Upper Punch(mm)	162
下冲长度 Length of Lower Punch(mm)	188
转盘转速 Turret Speed(r/min)	6-18
产量 Production Capacity (pc/h)	18000
功率 Motor Power (kw)	5.5-7.5
机器高度 Height (mm)	1870
重量 Weight (kg)	2200

ZP475-ZP25K系列旋转式压片机

ZP475-ZP25K SERIES ROTARY TABLET PRESS

本机用以将各种颗粒状原料压制成片状，除圆片外还可以压制各种几何形状的异形片，双面刻字片，其结构为双压式，有两套加料装置和两套压轮，转盘上可装25付活络式冲杆，旋转一周即可压制50片，压制圆片时，根据片径大小，冲杆上可装双冲，三冲和四冲，故适用于大批量生产，压片时转盘的转速，物料的充填深度，压片厚度，下冲伸出高度均可调节，随机附单独吸粉箱，通过吸粉管与吸嘴可吸取机械运转时所生产的吸尘，避免粉尘粘堵堵塞，并可回收原料重新使用。
可配备数字仪表、压力显示功能。

The machine used for pressing all kinds of granular materials into tablet, in addition to wafer, can also suppress a variety of geometric shapes shaped tablets, double-sided engraved tablets, dual-pressure structure, there are two feeding devices and two pinch roller. 25 active bunch can be mounted on a turntable, you can press 50pcs for a revolution, when press round tablet, according to the diameter size of the tablet, punch rod can be mounted dual, three and four punch so it is suitable for large mass production, tablet turntable speed when pressing, filling depth of material, tablet thickness, height of the can be adjusted under the hoisting out, attach a separate random priming powder box, through the suction pipe and nozzle powder can absorb mechanical suction produced by running dust, to avoid adhesion of dust clogging and recyclable material reused.



技术参数 Technical parameters

型号 Product No.	ZP15K	ZP25K
冲模数 Dies (sets)	15	25
产量 Production Capacity (pc/h)	36000	60000
最大压力 Max. Pressure(kN)	150	20-30
最大片径 Max. Dia. of Tablet(mm)	60	3-12
最大片厚 Max.Thickness of Tablet (mm)	3-18	15-36
充填深度 Max.Doph of Filling (mm)	15-43	20
转盘转速 Turret Speed(r/min)	20	2600
功率 Motor Power (kw)	7.5	5.5
外形尺寸 Overall Size (mm)	1200 x 1200 x 1800	1200 x 1200 x 1800
重量 Weight (kg)	2600	2600

ZP、ZPT420-15G系列旋转式压片机

ZP、ZPT420-15G SERIES ROTARY TABLET PRESS

用途与适用范围:

- 本机是一种自动旋转、连续压片的机器。它主要用于制药工业的片剂制造，也适用于食品、化工、电池、电子、陶瓷等工业部门，将颗粒状原料压制成片剂。
- 本机适用于能压制成形的、含粉量（100目以上）不超过10%的颗粒状原料的压制。不适用于半固体、潮湿低熔点、易潮原料和无颗粒的粉末压制。
- 本机适用于压制40-50毫米的圆形、刻字片剂。

Purpose and scope of application:

- This machine is a automatic rotary and continuous tablet machine, which can press the granules material to be tablet. It's mainly application in manufacturing various tablets in pharmaceutical industry, and it is also suitable for foodstuffs, chemicals, batteries, electronics, ceramics industries, etc.
- This machine is suitable for pressing the tablet, which can make tablet from the powder with press-molded and contained the powder(above 100 mesh) but not overpass 10% granule powder, it's not suitable for pressing powders which are semi-solid, low melting point damp, moisture sensitive materials and particle-free.
- This machine is suitable for pressing 4-50mm round and letter tablets.



技术参数 Technical parameters

型号 Product No.	15G
冲模数 Dies (sets)	15
最大压力 Max. Pressure(kN)	150
最大片径 Max. Dia. of Tablet(mm)	50
最大片厚 Max.Thickness of Tablet (mm)	15
充填深度 Max.Depth of Filling (mm)	15-35
转盘转速 Turret Speed(r/min)	1-9
产量 Production Capacity (pc/h)	16000
电压 Voltage(v/Hz)	380/50
功率 Motor Power (kw)	4
外形尺寸 Overall Size (mm)	1200 x 950 x 1900
重量 Weight (kg)	3000

ZPXD8系列旋转式压片机(上驱动)

ZP420A/B-35A/B SERIES ROTARY TABLET PRESS

本机是一种单压式自动旋转、连续压片的机器。将颗粒压制成片剂、除能压制圆片还能压制各种几何形状异形片。

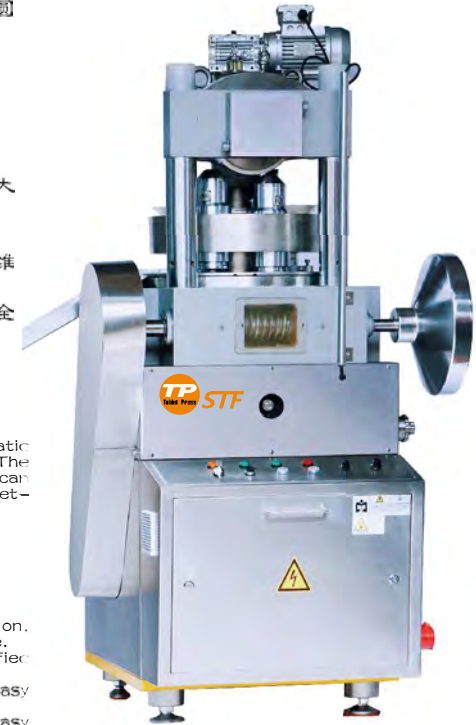
特点:

- 压片直径最大能达到80mm
- 独有的轨道设计、有效减少摩擦、大大增加模具寿命
- 独有的强迫加料器、加料统一准确
- 设备机械机构简单易用，便于清洁及维护
- 变频调速、操作方便、转动平稳、安全准确。
- 可配备数字仪表、压力显示功能。

This machine is a single roller automatic rotation, continuous tableting machines. The particles are pressed into tablets can uppress discs can suppress various geometric shaped piece.

CHARACTERISTICS:

- The largest diameter can reach 80mm.
- Orbit design unique, reducing friction, greatly increase the service life of die.
- The force feeder, feeding a unique unified accurate.
- Equipment is simple and easy to use, easy cleaning and maintenance.
- Variable frequency speed regulation, easy operation, stable rotation, safe and accurate.



技术参数 Technical parameters

型号 Product No.	ZPXD8
冲模数 Dies (sets)	8
最大片径 Max. Dia. of Tablet(mm)	80
最大片厚 Max.Thickness of Tablet (mm)	12-24
转盘转速 Turret Speed(r/min)	11
充填深度 Max.Depth of Filling (mm)	33-53
产量 Production Capacity (pc/h)	5280
最大压力 Max. Pressure(kN)	150
功率 Motor Power (kw)	7.5
外形尺寸 Overall Size (mm)	750 x 860 x 1900
电压 Voltage(v/Hz)	380/50
重量 Weight (kg)	1600

ZPCD600系列旋转式压片机(上驱动) ZPCD600 SERIES ROTARY TABLET PRESS

本机用以将各种颗粒状原料压制成药片，是适合批量生产的基本设备。压片时转盘的速度、物料的充填深度、压片厚度均可调节。机上的机械缓冲装置可避免因过载而引起的机件损坏。机内配有吸粉箱，通过吸嘴可吸取机器运转时所产生的粉尘，避免粘堵堵塞，并可回收原料。

可配备数字仪表、压力显示功能。

This machine is designed for pressing round tablets from various kinds of granular materials. It is primary machine to fit batch production of tablets. During operation, the speed of the turret, the depth of the filling material and the thickness of the tablets can be adjusted. The mechanical buffer unit will prevent punches and apparatus from overload damage. A powder suction unit is attached to take in the residual powder can be eliminated and the collected powder material can be reused.



技术参数 Technical parameters

型号 Product No.	ZPCD15	ZPCD27
冲模数 Dies (sets)	15	27
最大压力 Max. Pressure(kN)	200	120
最大片径 Max. Dia. of Tablet(mm)	60	40
最大片厚 Max. Thickness of Tablet (mm)	22	22
充填深度 Max. Depth of Filling (mm)	48	48
转盘转速 Turret Speed(r/min)	10	10
产量 Production Capacity (pc/h)	9000	16200
功率 Motor Power (kw)	15	7.5
外形尺寸 Overall Size (mm)	1100 × 1180 × 2000	1100 × 1000 × 1900
重量 Weight (kg)	3600	3500

ZP、ZPT420DI-TF55系列旋转式压片机 ZP、ZPT420DI-TF55 SERIES ROTARY TABLET PRESS

特点: (安全、高产量、高性价比)

本机是一种双压式自动旋转，连续压片的中速高产能机器，将颗粒状原料压制成药片、刻字和异形、双色片等。它主要用于医药工业的制剂生产，同时适用于化工、食品、电子等工业企业。

- 外围罩壳为全不锈钢封闭形式，内部台面采用不锈钢材料，能保持表面光泽与防止交叉污染，符合GMP要求。
- 装有有机玻璃透视窗，可视压片状态，侧面板能全部打开，易于内部清理和保养。
- 所有控制器和操作件均布局合理。
- 采用变频调速装置进行电气调速，操作方便，转动平稳，安全准确。
- 配有过载保护装置，当压力过载时，能自动停机。
- 实行机电一体化，采用触摸键及屏幕显示。
- 率先试用半自动润滑装置及转台上端有机玻璃防尘装置。
- 传动系统密封在主机下方油箱中，是安全分离的独立部件，亦不会有相互污染，又使传动部浸在油池中，易散热且耐磨。
- 配有吸粉装置，能将压制室内的粉尘吸取。
- 易损件如轨道、加料器、料斗、传动蜗杆、粉量器等与ZP33型产品具有通用结构，有利于标准化、通用化、系列化。

主要特点: (GMP可溯源机型具备的功能)

- 采用PLC控制，具有自动保护功能(超压、过载、急停装置)。
- 双压式，全封闭结构。
- 采用变频调整。
- 人机界面，操作方便友好。
- CE配置可选择。
- 具有压制片剂数据屏幕打印功能。
- 片剂超差保护功能，使片剂生产片剂更精准。

Product Features:

- This machine is a kind of double pressure type automatic rotation, continuous tablet machine, granular materials will be compressed into round, lettering and anomalous tablet, double color tablets. It is mainly used in pharmaceutical industry tablet production, at the same time, it is suitable for chemicals, food electronic, and other industrial enterprises.

技术参数 Technical parameters

型号 Product No.	TF55
冲模数 Dies (sets)	55
最大压力 Max. Pressure(kN)	80
最大片径 Max. Dia. of Tablet(mm)	10
最大片厚 Max. Thickness of Tablet (mm)	6
充填深度 Max. Depth of Filling (mm)	15
转盘转速 Turret Speed(r/min)	35
产量 Production Capacity (pc/h)	231000
电压 Voltage(V/Hz)	380/50
功率 Motor Power (kw)	4
外形尺寸 Overall Size (mm)	1240 × 980 × 1650
重量 Weight (kg)	1850



- Peripheral casing is closed form which is made of stainless steel, internal mesa adopt stainless steel material, it can keep the surface glossy and prevent cross contamination and meet GMP requirement.
- It is equipped with organic glass and visual window, visual tablet state, all of the side plate can turn or clear up and maintenance is easy.
- All controller and operating parts are rational layout.
- It is equipped with variable frequency speed control device for electrical control convenient operation, steady running, it is safe and accurate.
- It is equipped with overload protection device, when pressure overload, it can stop automaticly.
- It is the mechanical and electrical integration, has touch key and screen display.
- Be the leader in trying to use semi-automatic lubrication device and the top of rotary table is equipped organic glass dust prevention device.
- Transmission system is sealed on the main tank below, is a safe separation of independent components, also has no cross pollution, and transmission of infiltration in the oil pool, easy to has heat output and also it is wearable.
- It is equipped with powder absorbing device, can absorb indoor dust.
- Wearing parts like orbit, feeder, hopper, drive worm, powder taking equipment and it has general structure with ZP33 type product, it is helpful for standardization, generalization and seriation.

ZP、ZPT680、680i系列旋转式压片机

ZP、ZPT680、680i SERIES ROTARY TABLET PRESS

本机是一种双压式自动旋转，连续压片的机械，将颗粒状原料压制成药片，刻字和异形，双色片剂。它主要用于制药工业的片剂生产，同时适用于化工，食品，电子等工业企业。

特点:

- 外围罩壳为全不锈钢封闭形式，内部台面采用不锈钢材料，能保持表面光泽与防止交叉污染，符合GMP要求。
- 装有有机玻璃透视窗，可视压片状态，侧面板能全部打开，易于内部清理和保养。
- 所有控制器和操作件均布局合理。
- 采用变频调速装置进行电气调速，操作方便，安全准确。
- 配有过载保护装置，当压力超载时能自动停机。
- 实行机电一体化，采用触摸键及屏幕显示。
- 率先试用半自动润滑装置及转台上端有有机玻璃防尘装置。
- 传动系统密封在主机下方油箱中，是安全分离的独立部件，亦不会有互相污染，又使传动都浸润在油池中，易散热且耐磨。

以下可选配:

- 人机界面，触摸屏操作，操作方便，具有故障点自诊断功能。
- 数字显示主压力，片剂厚度，充填深度及转速，产量。
- 电子式冲模过载保护。
- 自动润滑系统。

主要特点: (CGMP可溯源机型具备的功能)

- 采用PLC控制，具有自动保护功能(超压、过载、急停装置)
- 双压式，全封闭结构。
- 采用变频调整。
- 人机界面，操作方便友好。
- 数字显示主压力、出片力、片剂厚度、填充深度及转速。
- CE配置可选择。
- 具有压制片剂数据屏幕打印功能。
- 片剂超差保护功能，使片剂生产片剂更精准。

This machine adopts double rollers and continuous press machine, it is to press the various kinds of granular materials into tablet form, with the most outstanding advantage of being able to produce irregular tablets with widely different geometrical shapes, such as double layer tablets, double side engraved tablets, it mainly used in the pharmaceutical industry and are also suitable for chemical foods, electronics industry.

CHARACTERISTICS:

- This machine adopts a fully enclosed structure with the operation compartment isolated compartment from the outside, ensuring the cleanness in the tablet compressing area without creation of cross contamination with the outside, the compressing compartment is wholly made of stainless steel, which is in compliance with the GMP requirement on the production of pharmaceuticals.
- The surface of turret is with chrome plating to avoid the wearing of turret.
- The speed adjustment of the driver is controlled by the frequency conversion device.
- The machine adopts adjustment of speed by means of frequency inversion, the motor is connected with under plate to avoid the motor shaking when working.
- An overload protection unit is equipped in the machine to avoid the damage of the punches and apparatus when overload occurs, the machine stops automatically.
- The machine's worm gear drive adopts fully-enclosed oil-immersed lubrication with long service-life.
- Prevent cross pollution.
- The transmission system in the host sealed beneath the tank, it is safe separation of individual components, there will not be cross-contamination, and the transmission system infiltrating the oil sump, easy to send out heat and wear resistant.
- The series machines have protective device for upper punches broken.



技术参数 Technical parameters

型号 Product No.	ZP75	ZP68	ZP61	ZP35	ZP27	ZP45
冲模数 Dies (sets)	73	65	51	35	27	45
最大压力 Max. Pressure(KN)	80	80	100	120	120	80
冲杆直径 Diameter of Punch	19	22	26	40	50	25.35
中模直径 Diameter of Middle Die	22	26	34	52	68	38.1
最大片径 Max. Dia. of Tablet(mm)	11	12	20	40-36	45	20
充填深度 Max. Depth of Filling (mm)	15	15	18-33	18-33	18-33	18
最大片厚 Max. Thickness of Tablet (mm)	6	6	8-14	8-14	8-14	8
转盘转速 Turret Speed(r/min)	30	30	25	20	18	25
产量 Production Capacity (pc/h)	262800	234000	153000	84000	58320	135000
电压 Voltage(V/Hz)	380/50	380/50	380/50	380/50	380/50	380/50
功率 Motor Power (kw)	7.5	7.5	11	15	15	7.5
外形尺寸 Overall Size (mm)	1150 x 1150 x 1900					
重量 Weight (kg)	3500	3500	3800	4000	4000	3800

ZP、ZPT680C、680Ci系列旋转式压片机

ZP、ZPT680C、680Ci SERIES ROTARY TABLET PRESS

本机是一种三压式自动旋转，连续压片的机械，将颗粒状原料压制成药片，刻字和异形，双色三色片剂。它主要用于制药工业的片剂生产，同时适用于化工、食品、电子等工业企业。

特点:

- 外圈罩壳为全不锈钢封闭形式，内部台面采用不锈钢材料，能保持表面光泽与防止交叉污染，符合GMP要求。
- 装有有机玻璃透视视窗，可视压片状态，侧面板能全部打开，易于内部清理和保养。
- 所有控制器和操作件均布局合理。
- 采用变频调速装置进行电气调速，操作方便，安全准确。
- 配有过载保护装置。当压力过载时能自动停机。
- 实行机电一体化，采用触摸键及屏幕显示。
- 率先试用半自动润滑装置及转台上端有机玻璃防尘装置。
- 传动系统密封在主机下方油箱中，是安全分离的独立部件，亦不会有互相污染，又使传动都浸润在油池中，易散热且耐磨。

以下可选配:

- 人机界面，触摸屏操作，操作方便，具有故障点自诊断功能。
- 数字显示主压力，片剂厚度，充填深度及转速，产量。
- 电子式冲模过载保护。
- 自动润滑系统。

主要特点: (CGMP可溯源机型具备的功能)

- 采用PLC控制，具有自动保护功能(超压、过载、急停装置)
- 双压式，全封闭结构。
- 采用变频调整。
- 人机界面，操作方便友好。
- 数字显示主压力、出片力、片剂厚度、填充深度及转速。
- CE配置可选择。
- 具有压制片剂数据屏幕打印功能。
- 片剂超差保护功能，使片剂生产片剂更精准。

This machine is a three-pressure automatic rotation, continuous tableting machine, pressing granular raw materials into the wafer, lettering and shaped, two-color and three-color tablet. It is mainly used for tablet production in the pharmaceutical chemical, food, electronics and other industrial enterprises.

(Note: the production of three-color piece just need change parts and add powder suction device, so that both cost reduction, but also gain).

CHARACTERISTICS:

- Stainless steel outer casing is fully closed form, the internal tops, stainless steel materials which could keep surface luster and prevent cross-contamination, meet GMP requirements.
- With plexiglass perspective window, visible tableting state, the side panels can be opened, easy to clean and maintain.
- PLC programming and touch screen with digital display, with a USB interface, enabling tablet data collection work status.
- Equipped with overload protection device, when the pressure overload, can automatically shut down.
- The first semi-automatic lubricating device and turntable trial upper plexiglass dust devices.
- The transmission system in the host sealed beneath the tank, it is safe separation of individual components, there will not be cross-contamination, and the transmission system infiltrating the oil sump, easy to send out heat and wear resistant.
- With a powder suction unit, can absorb dust suppression chamber.
- Fully enclosed compression compartment, structure and material are in compliance with GMP requirements.

Below can optional:

- Man-machine interface, touch screen operation, easy to operate, with a self-diagnostic function point of failure.
- Figures show the main pressure, tablet thickness, filling depth and speed.
- Electronic overload die.
- Automatic lubrication system.



技术参数 Technical parameters

型号 Product No.	ZP73C	ZP65G	ZP51G	ZP35G	ZP27C	ZP45G
冲模数 Dies (sets)	73	65	51	35	27	45
最大压力 Max. Pressure(KN)	80	80	100	120	120	80
冲杆直径 Diameter of Punch	19	22	26	40	50	25.35
中模直径 Diameter of Middle Die	22	26	34	52	68	38.1
最大片径 Max. Dia. of Tablet(mm)	11	12	20	36	45	20
充填深度 Max.Depth of Filling (mm)	15	15	18-33	18-33	18-33	18
最大片厚 Max.Thickness of Tablet (mm)	6	6	8-15	8-15	8-15	8
转速转速 Turnet Speed(r/min)	30	30	25	20	18	25
产量 Production Capacity (pc/h)	394200	351000	229500	126000	87480	202500
电压 Voltage(V/Hz)	380/50	380/50	380/50	380/50	380/50	380/50
功率 Motor Power (kw)	7.5	7.5	11	15	15	7.5
外形尺寸 Overall Size (mm)	1150 x 1150 x 1900					
重量 Weight (kg)	3500	3500	3800	4000	4000	3800

ZP、ZPT1180系列旋转式压片机

ZP、ZPT1180 SERIES ROTARY TABLET PRESS

ZPT1180是一台五压式、自动旋转式连续压片机，将颗粒状粉末原料，压制成药片、刻字片、异形片、五色五层片。该五压式压片机主要用于制药工业的片剂生产，同时适用于化工、食品、电子等行业。

特点：

- 外形以多边形形状，不锈钢全封闭式，内部台面采用不锈钢材料，能保证表面光泽，杜绝粉末交叉污染。
- 装有玻璃透视窗，可视压片状况，整机面板可以全部打开，易于整机内部清洁与保养。
- 采用变频调速装置，进行电气下驱动调速，操作方便，转速平稳，安全准确。
- 配备过载、过流保护装置，当压力过载电流过大时，能自动停机。
- 实现机电一体化，触摸屏控制，可在显示器上设定各项压片参数，并显示各项参数指标。并会显示机器的故障问题。（选配）
- 本机率先使用半自动润滑系统，对主要部件点进行加油润滑。
- 传动系统密封在主机下方油箱中，是安全分离的独立部件，亦不会有相互污染，又使传动部件浸润着油池中，易散热且耐磨。
- 配备吸粉系统装置，对压制室的多余粉尘进行清洁吸除。
- 可配备数字仪表、压力显示功能。

ZPT1180 is a five press, automatic rotary continuous tablet press, which can press granular powder into round, lettered, special-shaped and five color five layer tablets. The five press tablet press is mainly used for tablet production in pharmaceutical industry, and also suitable for chemical industry, food industry and electronic industry.

CHARACTERISTICS:

- It is polygonal shape, with stainless steel fully enclosed, internal countertops with high standards of food-grade stainless steel, to ensure that the surface gloss, put an end to the powder of cross-contamination.
- With glass viewing window, tablet situation visual, the whole panel can all be open, easy to machine internal cleaning and maintenance.
- Using frequency control devices, electrical low-driving speed control, easy to operate, steady speed safety and accuracy.
- Equip overload, over current protection device when pressure overload or too large current, can automatically shut down.
- It is mechatronics, touch screen control various tablet parameters can be set on the display, and displays the parameters of the indicators. And failure of the machine will be displayed. (Optional)
- Native pioneered using semi-automatic lubrication systems, lubrication of the main components of points.
- Powertrain sealing in the fuel tank which below hosts is safe separation of the individual components, will not have any cross-contamination, and transmission parts soak oil pool, easy to send out heat and wear resistant.
- Equipped with powder system device, clean and suck the excess dust in suppress room.



技术参数 Technical parameters

型号 Product No.	ZP131	ZP114	ZP91	ZP60
冲模数 Dies (sets)	131	114	91	60
最大压力 Max. Pressure(KN)	120	120	120	120
冲杆直径 Diameter of Punch(mm)	19	22	26	42
最大片径 Max. Dia. of Tablet(mm)	10	12	22	40
最大片厚 Max.Thickness of Tablet (mm)	6	6-16	11-16	16
充填深度 Max.Depth of Filling (mm)	16	16	26	36
转盘转速 Turret Speed(r/min)	18	18	18	18
产量 Production Capacity (pc/h)	707400	615600	491400	324000
五层产量	141480	123120	98200	64800
功率 Motor Power: (kw)	5.5-4			
电压 Voltage(v/Hz)	380/50			
外形尺寸 Overall Size (mm)	1800 x 1800 x 1900			
重量 Weight (kg)	9500			

ZP420系列旋转式脆面机

ZP420 SERIES ROTARY NOODLE PRESS

本机是一种单压式自动连续压片机器，主要用于食品、化工、电子、塑料等行业。

特点:

- 外围罩壳采用不锈钢材料，符合GMP标准
- 能压制普通、异形等多种片剂形状
- 设备机械机构简单易用，便于清洗及维护
- 对粘冲物料的压制有极大的改善，特别适用于对粘冲物料的压制
- 特别设计强迫加料器适用于各种物料
- 可配备数字仪表、压力显示功能

This machine is an automatic continuous tabletting single pressure machine, mainly used in food, chemical, electronics, plastics and other industries.

Product Features:

- The external casing is made of stainless steel material, accord with GMP standard.
- Can suppress ordinary, special-shaped tablet shape etc.
- Equipment is simple and easy to use, easy cleaning and maintenance.
- A great improvement on suppressing sticking material, especially the repression of sticking material.
- The special design of the forced charging device is suitable for various materials.



技术参数 Technical parameters

型号 Product No.	ZP420
冲模数 Dies (sets)	31-49
最大压力 Max. Pressure(kN)	40
最大片径 Max. Dia. of Tablet(mm)	20
最大片厚 Max.Thickness of Tablet (mm)	15
充填深度 Max.Depth of Filling (mm)	30
转盘转速 Turnet Speed(r/min)	25
产量 Production Capacity (pc/h)	11600-147000
功率 Motor Power (kw)	4
电压 Voltage(v/Hz)	380/50
外形尺寸 Overall Size (mm)	850 x 1100 x 1600
重量 Weight (kg)	1780

ZP420坩埚压机 (专用机)

ZP420 CRUCIBLE TABLET MACHINE

本机是一种自动旋转，连续压制的机器。主要用于医药、食品、化工、冶金、陶瓷等行业的片剂和其它形状产品的生产的。本机适用于能压制成形（本机压力范围内）的，而且含粉量（100目以上）不超过10%的颗粒状原料压制成各种形状的片剂。本机适用于压制直径30毫米，厚度20-28内的圆形、异形、双面刻字、深凹形等片剂和物体。为防止粉尘飞扬，设有吸粉咀，风口接专门的吸风设备，吸去工作台周围的粉尘，净化空气，保证机器正常运转。

This machine is an automatic rotation, continuous pressing machine. Mainly used in medicine, food, chemical, metallurgy, ceramics and other industries and other form of product production.

This machine is suitable for energy compaction (the machine pressure range), with powder (100 mesh) is less than 10% for pressing granular raw materials into various shapes of tablet. This machine is suitable for pressing diameter 30 mm, rounded, irregular, double-sided lettering, such as deep concave tablet and the thickness of the object in the 20-28. To prevent dust, a suction outlet connected with the special powder, suction device, dust smoke to go around the table to purify the air, to ensure the normal operation of the machine.



技术参数 Technical parameters

型号 Product No.	ZP420
冲模数 Dies (sets)	21
最大压力 Max. Pressure(kN)	150
最大片径 Max. Dia. of Tablet(mm)	30
最大片厚 Max.Thickness of Tablet (mm)	20-28
充填深度 Max.Depth of Filling (mm)	40
转盘转速 Turnet Speed(r/min)	2-15
产量 Production Capacity (pc/h)	18900
电压 Voltage(v/Hz)	380/50
功率 Motor Power (kw)	5.5
外形尺寸 Overall Size (mm)	920 x 1100 x 1950
重量 Weight (kg)	1800

泡腾片专用压片机

本机为我公司专门开发的一款用于压制泡腾片的压片机。针对粘性强、脱模困难的片剂。采用独特的脱模方式，保证压制出来的片剂光洁、漂亮、美观。是生产泡腾片、粘性强的消毒剂等片剂的理想设备。

特点:

- 此机型针对粘性强、流动性差、易受潮、湿度高的粉体采用特殊设计;
- 是高湿度的压制环境的最佳选择;
- 设备采用不锈钢材质,符合GMP要求;
- 采用变频调速方式,针对不同的片剂调整速度;
- 压制室采用有机玻璃全封闭起来,安全有效;



技术参数 Technical parameters

型号 Product No.	ZPW23D	ZPW25D
冲模数 Dies (sets)	23	25
最大压力 Max. Pressure(kN)	100	80
最大片径 Max. Dia. of Tablet(mm)	32	22
充填深度 Max.Depth of Filling (mm)	15-28	15-33
最大片厚 Max.Thickness of Tablet (mm)	12	14
转速转速 Turnet Speed(r/min)	20	20
产量 Production Capacity (pc/h)	55200	60000
功率 Motor Power (kw)	5.5	4
电压 Voltage(v/Hz)	380/50	380/50
外形尺寸 Overall Size (mm)	920 x 890 x 1540	920 x 890 x 1540
重量 Weight (kg)	2000	2000

PRC600 普洱茶块机

PRC600 PU' ER TEA TABLET MACHINE

本机为我公司新型产品,单压式、自动旋转连续压片设备。广泛适用于食品、电子等行业。

用途与适用范围:

- 独创的压片设备、独有的压片形态
- 保压时间超长、对难结合物料有强烈的改善作用
- 独创上下模、方便可靠、易维护、使用寿命长
- 特别设计的强迫加料适用于各种物料
- 变频调速、操作方便、转动平稳、安全准确

This machine is the latest R & D equipment, single pressure, automatic rotation continuous tablet device. Widely used in food, electronics and other industries.

Product Features:

- The original pressing equipment, tablet form unique.
- To improve the effect of pressure holding time long, to the combination of materials have very strong.
- The use of the original upper and lower mould, convenient and reliable, easy maintenance, long life.
- The special design of the forced charging device is suitable for various materials.
- Variable frequency speed regulation, easy operation, stable rotation, safe and accurate.



技术参数 Technical parameters

型号 Product No.	PR-700
冲模数 Dies (sets)	30
最大片径 Max. Dia. of Tablet(mm)	38
最大片厚 Max.Thickness of Tablet (mm)	20
充填深度 Max.Depth of Filling (mm)	58-88
产量 Production Capacity (pc/h)	14400
最大压力 Max. Pressure	6t
功率 Motor Power (kw)	3
外形尺寸 Overall Size (mm)	1100 x 1100 x 1750
电压 Voltage(v/Hz)	380/50
重量 Weight (kg)	2800

CF型物料吹粉机

CF Type Material Blowing Machine

使用范围:

本设备适用于泡腾片、消毒片、糖类等容易粘冲物料进行压片时，对压片机模具喷涂硬脂酸镁等润滑剂涂层，以达到便于片剂脱模、防止粘冲等作用。

工作原理:

将粉体状硬脂酸镁加入设备料筒，通过搅拌、螺杆输送，同压缩空气混合形成硬脂酸镁与空气的混合气体，在通过喷嘴对压片机模具进行喷涂。



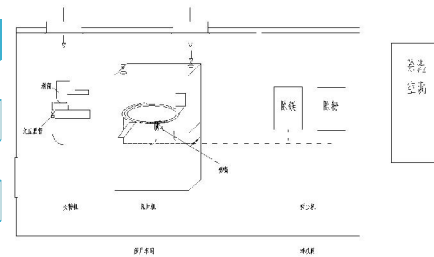
使用范围:

- 本机采用可调气源处理器来调节喷射速度，根据生产需要方便的调节射量的大小。
- 本机能够适应不同的冲模，更换品种简便。
- 本机根据需要可配备全套不同规格的喷嘴。
- 本机配备的喷射装置带有吹尘口，通过四通接头与吸尘器连接，以保证冲模范围之外的粉尘能够被收纳。
- 本机与物料接触的金属部件采用316L不锈钢材质，非金属部件采用白色POM等不污染产品的材料，符合FDA要求，并提供材质证明书。
- 本机内外表面所有凹凸部件全部采用圆弧过渡（R≥10mm），紧固方式不采用外露螺钉，确保无死角易清洁。
- 可满足现代化生产的需要，同时采用高效气、电一体控制，混合气体浓度、喷射速度均可调控。

技术参数 Technical parameters

参数 Data	型号 Model	CF
电压 Voltage (v)		380V/3P
功率 Power (kW)		0.2
外形尺寸 Overall size (mm)		710x512x1430
压缩空气 Compressed air		D=0.3MPa
重量 Weight (kg)		100kg

原理图



QVC系列真空上料

QVC SERIES VACUUM CONVEYING



QVC系列气动真空（管道）输送系统和QVC真空上料机属于第三代产品。QVC系列产品与国内同类先进产品相比较，具有明显的优点，即良好解决混合物料分层问题、完全消除物料静电和智能化自动运行，适应更多的物料及与各种工艺设备的配套使用。

特点:

- 符合GMP要求，采用304或316不锈钢制造
- 输送能力强，内壁精密抛光，不粘结物料
- 采用物料软着陆技术，确保物料原有特性不改变
- 卫生洁净，采用无毒、耐腐蚀的材料
- 智能控制，操作简单
- 积木式结构，方便拆卸，无死角，便于清洗
- 环境保护，密闭无泄漏
- 轻便易安装，重量轻、体积小，低噪音、无震动
- 经济节能，运行费用低
- 高度自动化，分为料位检测型和防爆型
- 消除物料静电

QVC系列气动真空（管道）输送系统和QVC真空上料机的输送距离可以达到水平95米，垂直30米。最大输送能力达到18吨/小时。根据物料特性的不同，选择合适的上料机型号已达到最佳输送效果。

技术参数 Technical parameters

型号 Product No.	输送能力 Transportation Ability (kg/h)	空气压力 Air Pressure (mpa)	空气消耗 Air Consuma (l/min)
QVC-1	350	0.6	180
QVC-2	700	0.6	360
QVC-3	1050	0.6	540
QVC-4	1500	0.6	720
QVC-5	3000	0.6	1440

The third era vacuum convey or uses multi-stage ejector pump and metal filter. Our products are the third era products. We develop the vacuum conveyor follow the combination of the aerospace and international GMP criterion strictly. Our technology has achieved international advance level. Our products can solve the stratification of powder and granules, and eliminate the static electricity.

Product Features:

- Using compressed air as primary energy sources.
- According with GMP standard.
- Solving the stratification of powder and granules.
- The filters made of Ti will never be jammed and be abraded.
- Eliminate the static electricity.
- Made of nontoxic and corrosion resistant materials.
- Leakage free capsule, to prevent cross contamination.
- Materials are not adhering to the inner surface of the conveyor.
- Intelligent control and high automation.
- Modular structure, easy to clean and dismantle.
- Small and light, easy to install.
- Low noise and free from vibration.
- Energy saving and low running cost.

QVC conveying system consist of material container, pipeline, vacuum conveyor, control system and so on. The max distance to i convey is 30m in height or 90m in length and the max conveying icapability can reach 18 t/h.

GJ-VIII 药片专用金属探测仪

G-VIII Digital Metal Detector (For Tablets)

多种工作频率选择, 有自学习功能, 可根据产品不同自动切换频率; LCD触摸屏操作, 多语言操作界面, 方便快捷; 存储100种产品数据, 适合品种多变的生产线; 检测稳定可靠, 特殊结构设计抗干扰能力强。

特点:

- 产品主要用于检测药片, 胶囊产品中的各类金属异物, 广泛应用于制药行业。设备可与压片机, 筛选机, 胶囊填充机联线工作;
- 可检测全金属异物, 包括铁 (Fe), 非铁 (Non-Fe), 和不锈钢 (Sus);
- 带高级自学习功能, 可自动根据产品特性推荐合适的检测参数;
- 机器标配有自动剔除系统, 不良品在检测过程中被自动剔除;
- 采用先进的DSP技术, 可有效提高检测能力;
- LCD触摸屏操作, 多语言操作界面, 方便快捷;
- 机器高度和进料角度可调节, 方便在不同产品线上使用。

技术参数 Technical parameters

规格Model	GJ-VIII
检测灵敏度Sensitivity Fe ϕ (mm)	0.5
检测灵敏度Sensitivity Sus ϕ (mm)	1.0
通道高度Tunnel Height (mm)	25
通道宽度Tunnel Width (mm)	115
检测方式Detection Speed	自由落体Free-falling Speed
电源要求Power Supply	220v
报警方式Alarm Method	报警剔除Buzzer Alarm with flapping Rejection



HRD-100高速筛片机

HRD-100 High Speed De-duster



HRD-100型高速筛片机应用压缩空气吹扫, 离心除粉, 滚筒磨边及真空吸尘原理, 清除附着在片子表面的粉末及边缘毛边, 使片子表面光洁, 边缘整齐。用于压片机压出的圆片、异形片特别是大片径片子、刻字片的高速、高效除粉, 可与任何类型的中、高速压片机连机使用。

- 本机按GMP标准设计, 整机采用304不锈钢制造。
- 气流吹扫装置近距离吹扫片子, 彻底清扫片子表面和刻字图案内粉尘。
- 离心除粉, 滚筒磨边, 高效除粉并有效保护片子边缘。
- 无刷气流抛光, 避免片子或胶囊表面产生静电。
- 除粉距离长, 除粉和磨边同步完成。
- 高产量、高效率, 更适合于处理大片子、刻字片、中药片, 可直接与各类中、高速底片机连机。
- 筛片箱与动力箱相互独立, 快卸式结构, 装卸、清洗方便, 节省时间。
- 进料口和出料口高度、角度可自由调节, 方便灵活。

采用无级调速电机, 筛鼓转速连续可调。

技术参数

Technical parameters

电源Electrical Connections	220v, 50Hz, 1P/110V, 60Hz, 1P
输入功率Power Input	100W max
片子尺寸Tablet Size (mm)	ϕ 5- ϕ 22
筛鼓转速Drum Speed (rpm)	10-150
吸风量Suction Capacity (m ³ /h)	350
压缩空气Compressed Air	3bar (无油、水并经过滤Oil, water and dust-free)
产量Output (tab./h)	80000片/小时 (ϕ 6mm圆片)
整机重量Weight (kg)	35
外形尺寸Overall Size (mm)	750 x 320 x 1030

SZS230上旋式筛片机

SZS230 Series De-duster

SZS230型是一款经济型的上旋式筛片机, 它具备片剂磨光、除尘和提升三重功能, 机器入口可以和任何型号的压片机连接使用, 出口可以和金属检测机的连接使用。实现了片剂磨光、除尘、提升和金属异物检测的联机生产模式。

- 该机具有片剂除尘路径长, 药片自动翻面磨光, 除尘效果好的特点;
- 机器与药品接触部件的材质是SUS316L/ SUS304符合GMP要求;
- 机器的筛体、外罩均采用积木式设计, 出口高度易于调整;
- 整机采用快装式连接结构, 使得机器的拆卸, 安装快捷, 清洗无死角;
- 机器入口和出口均可做360度的圆周调整, 便于生产, 节省空间;
- 突出的生产效率, 能满足 ϕ 3- ϕ 25mm各种形状药片的大批量生产;
- 采用新型驱动装置设计, 从而保证机器运行更加平稳、低噪。

- The machine has the characteristics of long dust removal path, automatic turning and polishing of tablets, and good dust removal effect;
- The material of contact parts between machine and drug is SUS316L / SUS304, which meets GMP requirements;
- The screen body and cover of the machine are designed with building blocks, and the outlet height is easy to adjust;
- The whole machine adopts the quick installation connection structure, which makes the disassembly and installation of the machine fast, and there is no dead corner in cleaning;
- The entrance and exit of the machine can be adjusted by 360 degree circle, which is convenient for production and space saving;
- Outstanding production efficiency, which can meet the requirements of mass production of various shapes of ϕ 3 - ϕ 25mm tablets;
- The new driving device is designed to ensure the machine running more smoothly and with low noise.



技术参数 Technical parameters

型号Model	产量Output	最大片径Max. Dia. of tablet	电源Power Supply	外形尺寸Overall Dimensions	整机重量Weight	压缩空气Compressor Air	真空吸出Vacuum Cleaning	除尘距离Dust removing Distance	最大高度Max. lifting height
SZS-230	80000 pcs/h (ϕ 6mm)	ϕ 25mm	220v/110v 50-60Hz, 1P	550 x 550 x (H1350-1500) mm	70KG	0.1m ³ /min 0.05MPa	2.7m ³ /min 0.01MPa	6m	1220mm

XCG滤筒除尘柜

XCG Filter Cartridge Dust Removal Cabinet



适用于制药生产线中, 混合机、压片机、配料、套胶囊, 中药前处理工艺中粉料回收及喷涂粉末、冶金、铸造、喷砂、化工、水泥建材、机械加工耐火材料、碳素材料、粮食加工、石棉制品加工、矿山采掘等含尘气体净化。

特点:

过滤面积大、技术性能稳定、噪声低、耗电省、外型美观、使用灵活、清洗简便、占地面积小、适用范围广、除尘效率高。

CHARACTERISTICS:

It has the advantages of large filtration area, stable technical performance, low noise, low power consumption, beautiful appearance, flexible use, simple ash removal, small floor area, wide application range and high dust removal efficiency.

技术参数 Technical parameters

型号Model	处理风量 [Nm ³ /h]	过滤面积 (m ²)	过滤风速 [m/min]	机外余压 [pa]	功率 [kw]	外形尺寸 [mm]	噪音 [db]	重量 [kg]
XCG-8	700-900	12	0.97-1.25	≥ 1000	0.75	710 x 700 x 1740	65	230
XCG-10	900-1100	12	1.25-1.53	≥ 1000	1.1	710 x 700 x 1740	68	240
XCG-15	1400-1600	18	1.30-1.48	≥ 1100	2.2	780 x 740 x 1800	68	280
XCG-2E	1688-2476	30	0.94-1.38	≥ 1100	3.0	800 x 800 x 2010	70	310
XCG-3C	2664-3405	30	1.48-1.89	≥ 1100	4.0	840 x 800 x 2030	72	320
XCG-4C	3786-4527	36	1.75-2.10	≥ 1100	5.5	870 x 800 x 2210	75	340



感恩

讲诚信 敢担当

没有您

我怎么做得到

传承40年

粉末成形、压片机

制造精髓



m.tablet-press.net

www.tablet-press.net

www.tianfu126.com

400 880-5118



讲诚信 敢担当

只要有利于技术领先；

只要有利于提高质量；

只要有利于成本控制；

都是我们奋斗的源泉；

诚信负责，永续经营！

我们的要求：零缺陷品质管理！

我们的使命：为用户创造更大价值！



专利与认证

Patent and authentication



中药 Traditional Chinese Medicine

新一代中药旋转式压片机 中药粉末压片机

- 不漏粉 不易断冲 低速高扭矩不卡机
- 中药专用模具 高耐磨 超长使用寿命

新一代中药旋转式压片机

专门针对中药设计开发的

旋转式中药片剂压片机





● 生产效率高

● 根据客户要求可生产多种片形

● 可压双层、三层中药片剂



设备新增功能 Equipment to add function

